



**Water Monitoring Result at C7 - Windsor House
Mid-Flood Tide**

Date	Time	Weater Condition	Sampling Depth m	Water Temperature °C		pH -		Salinity ppt		DO Saturation %		DO mg/L		Turbidity NTU		Suspended Solids mg/L								
				Value	Average	Value	Average	Value	Average	Value	Average	Value	Average	Value	Average	Value	Average							
28/3/18	16:05	Fine	Middle	-	22.70	22.70	22.90	8.11	8.11	8.11	31.64	31.64	31.64	85.3	85.3	85.6	6.16	6.17	6.17	5.08	5.03	5.02	3	3.00
	16:07		Middle	-	23.10	23.10	22.90	8.11	8.11	8.11	31.63	31.63	31.64	86.1	85.7	85.6	6.24	6.11	6.17	5.00	4.98	5.02	3	3.00
30/3/18	16:25	Fine	Middle	-	22.90	22.90	22.90	8.02	8.02	8.02	32.01	32.01	32.01	75.6	77.8	76.1	5.13	5.28	5.17	4.78	4.27	4.31	7	5.50
	16:26		Middle	-	22.90	22.90	22.90	8.02	8.02	8.02	32.01	32.01	32.01	76.4	74.7	76.1	5.18	5.07	5.17	4.07	4.12	4.31	4	5.50

Remarks:
Single underline denotes exceedance over Action Level.
Double underline denotes exceedance over Limit Level.



**Water Monitoring Result at C7 - Windsor House
Mid-Flood Tide**

Date	Time	Weather Condition	Sampling Depth m	Water Temperature °C		pH		Salinity ppt		DO Saturation %		DO mg/L		Turbidity NTU		Suspended Solids mg/L								
				Value	Average	Value	Average	Value	Average	Value	Average	Value	Average	Value	Average	Value	Average							
3/4/18	8:20	Fine	Middle	-	22.90	22.90	22.90	8.11	8.11	8.10	31.19	31.19	31.19	79.2	79.2	79.0	5.68	5.68	5.66	5.00	5.01	5.01	4	3.50
	8:22		Middle	-	22.90	22.90	22.90	8.09	8.09	8.10	31.18	31.18	31.19	78.8	78.6	79.0	5.65	5.64	5.66	5.01	5.01	5.01	3	
5/4/18	11:30	Fine	Middle	-	25.40	25.40	25.40	8.07	8.07	8.07	31.71	31.71	31.71	73.1	76.6	74.0	5.01	5.25	5.07	1.32	1.32	1.30	8	8.00
	11:31		Middle	-	25.40	25.40	25.40	8.07	8.07	8.07	31.71	31.71	31.71	73.9	72.2	74.0	5.07	4.96	5.07	1.24	1.30	1.30	<2	
7/4/18	8:30	Cloudy	Middle	-	21.50	21.50	21.45	8.15	8.15	8.15	31.52	31.52	31.53	77.2	77.1	77.1	5.68	5.67	5.67	6.53	6.59	6.51	5	5.50
	8:32		Middle	-	21.40	21.40	21.45	8.14	8.14	8.15	31.53	31.53	31.53	77.0	76.9	77.1	5.67	5.67	5.67	6.49	6.44	6.51	6	
10/4/18	5:02	Fine	Middle	-	22.20	22.20	22.20	8.04	8.04	8.04	32.98	32.98	32.98	80.5	80.6	80.4	5.68	5.69	5.67	1.39	1.14	1.34	8	6.00
	5:03		Middle	-	22.20	22.20	22.20	8.04	8.04	8.04	32.98	32.98	32.98	80.3	80.1	80.4	5.67	5.65	5.67	1.49	1.34	1.34	4	
12/4/18	16:28	Fine	Middle	-	24.30	24.30	24.35	8.14	8.14	8.14	32.60	32.60	32.58	68.8	68.7	68.5	4.77	4.77	4.75	5.67	5.66	5.61	3	3.00
	16:30		Middle	-	24.40	24.40	24.35	8.14	8.14	8.14	32.55	32.55	32.58	68.5	68.1	68.5	4.73	4.72	4.75	5.69	5.43	5.61	3	
14/4/18	16:38	Fine	Middle	-	24.30	24.30	24.30	8.18	8.18	8.18	31.61	31.61	31.84	70.5	66.9	68.4	4.85	4.61	4.72	8.93	9.23	8.75	5	5.50
	16:40		Middle	-	24.30	24.30	24.30	8.18	8.18	8.18	32.06	32.06	31.84	68.8	67.2	68.4	4.77	4.65	4.72	8.43	8.41	8.75	6	
16/4/18	17:20	Rainy	Middle	-	22.20	22.20	22.20	8.18	8.18	8.18	32.91	32.91	32.43	57.3	56.9	57.2	4.15	4.12	4.14	8.71	8.71	8.72	7	6.50
	17:22		Middle	-	22.20	22.20	22.20	8.18	8.18	8.18	31.94	31.94	32.43	57.2	57.5	57.2	4.14	4.16	4.14	8.75	8.70	8.72	6	
18/4/18	20:55	Cloudy	Middle	-	22.70	22.70	22.70	7.97	7.97	7.97	32.35	32.35	32.35	74.7	73.0	73.1	5.36	5.24	5.25	2.72	2.69	2.75	15	11.50
	20:56		Middle	-	22.70	22.70	22.70	7.97	7.97	7.97	32.37	32.35	32.35	72.3	72.4	73.1	5.19	5.20	5.25	2.89	2.70	2.75	8	
20/4/18	8:35	Cloudy	Middle	-	23.60	23.60	23.65	8.14	8.14	8.14	32.45	32.45	32.45	77.2	77.3	77.1	5.43	5.43	5.42	7.18	7.16	7.17	12	11.50
	8:37		Middle	-	23.70	23.70	23.65	8.14	8.14	8.14	32.45	32.45	32.45	76.9	77.0	77.1	5.40	5.41	5.42	7.17	7.18	7.17	11	
23/4/18	11:35	Fine	Middle	-	24.90	24.90	24.95	8.08	8.08	8.08	32.23	32.23	32.23	81.4	81.5	81.4	5.60	5.61	5.60	6.71	6.80	6.75	8	7.00
	11:37		Middle	-	25.00	25.00	24.95	8.08	8.08	8.08	32.23	32.23	32.23	81.3	81.4	81.4	5.59	5.60	5.60	6.74	6.76	6.75	6	
25/4/18	12:40	Cloudy	Middle	-	24.20	24.20	24.25	8.12	8.12	8.12	31.76	31.76	31.76	78.7	78.5	78.4	5.50	5.47	5.47	8.29	8.28	8.27	9	9.50
	12:42		Middle	-	24.30	24.30	24.25	8.11	8.11	8.12	31.76	31.76	31.76	78.4	78.0	78.4	5.47	5.45	5.47	8.28	8.23	8.27	10	

Remarks:
Single underline denotes exceedance over Action Level.
Double underline denotes exceedance over Limit Level.



**Water Monitoring Result at C1 - HKCEC Extension
Mid-Flood Tide**

Date	Time	Weater Condition	Sampling Depth m	Water Temperature °C		pH -		Salinity ppt		DO Saturation %		DO mg/L		Turbidity NTU		Suspended Solids mg/L								
				Value	Average	Value	Average	Value	Average	Value	Average	Value	Average	Value	Average	Value	Average							
				28/3/18	15:20	Fine	Middle	3.0	21.90	21.90	21.90	8.12	8.12	8.12	31.72	31.72	31.72	83.9	84.1	83.9	6.11	6.12	6.11	5.64
15:22	Middle	3.0	21.90	21.90	21.90		8.12	8.12	8.12	31.72	31.72	31.72	83.8	83.7	83.9	6.10	6.09	6.11	5.58	5.51	5.59	4	4.00	
30/3/18	17:35	Fine	Middle	2.5	21.10	21.10	21.10	8.03	8.03	8.03	30.55	30.55	30.55	76.8	75.1	74.7	5.42	5.29	5.27	4.61	4.98	4.82	5	5.00
	17:36		Middle	2.5	21.10	21.10	21.10	8.03	8.03	8.03	30.55	30.55	30.55	74.0	73.0	74.7	5.21	5.15	5.27	4.79	4.88	4.82	5	5.00

Remarks:
Single underline denotes exceedance over Action Level.
Double underline denotes exceedance over Limit Level.



**Water Monitoring Result at C1 - HKCEC Extension
Mid-Flood Tide**

Date	Time	Weather Condition	Sampling Depth		Water Temperature			pH			Salinity		DO Saturation		DO		Turbidity		Suspended Solids					
					°C			-			ppt		%		mg/L		NTU		mg/L					
			m	Value	Average	Value	Average	Value	Average	Value	Average	Value	Average	Value	Average	Value	Average	Value	Average	Value	Average			
3/4/18	7:45	Fine	Middle	3.0	22.10	22.10	22.10	8.16	8.16	8.16	30.94	30.94	30.94	76.0	76.6	76.6	5.54	5.58	5.58	7.63	7.58	7.59	11	10.00
	7:47		Middle	3.0	22.10	22.10		8.16	8.16		30.94	30.94		76.8	76.9		5.60	5.61		7.57	7.56		9	
5/4/18	10:33	Fine	Middle	2.5	24.60	24.60	24.60	8.15	8.15	8.15	32.09	32.09	32.09	72.7	71.9	72.5	5.08	5.02	5.06	4.43	4.24	4.34	10	8.50
	10:34		Middle	2.5	24.60	24.60		8.15	8.15		32.09	32.09		72.7	72.5		5.08	5.06		4.36	4.31		7	
7/4/18	10:10	Cloudy	Middle	3.0	21.00	21.00	20.90	8.30	8.30	8.30	32.54	32.54	32.54	81.3	81.0	81.3	6.00	5.99	6.01	6.14	6.15	6.16	4	4.50
	10:12		Middle	3.0	20.80	20.80		8.30	8.30		32.54	32.54		81.4	81.5		6.02	6.03		6.17	6.16		5	
10/4/18	4:27	Fine	Middle	3.0	22.70	22.70	22.70	8.12	8.12	8.12	33.22	33.22	33.22	83.2	82.5	82.4	5.82	5.77	5.77	1.95	1.66	1.71	6	6.00
	4:28		Middle	3.0	22.70	22.70		8.12	8.10		33.22	33.22		82.0	82.0		5.75	5.74		1.76	1.45		6	
12/4/18	16:00	Fine	Middle	3.5	23.90	23.90	23.90	8.16	8.16	8.17	32.47	32.47	32.54	69.0	68.0	67.2	4.83	4.76	4.71	6.10	5.74	5.95	5	4.00
	16:02		Middle	3.5	23.90	23.90		8.17	8.17		32.60	32.60		66.8	65.1		4.68	4.56		5.73	6.24		3	
14/4/18	16:12	Fine	Middle	3.5	24.50	24.50	24.55	8.18	8.18	8.18	31.72	31.72	31.77	69.0	67.6	66.3	4.79	4.69	4.64	5.86	6.24	6.01	3	3.50
	16:14		Middle	3.5	24.60	24.60		8.18	8.18		31.82	31.82		64.1	64.5		4.59	4.47		6.06	5.87		4	
16/4/18	20:01	Rainy	Middle	3.5	21.70	21.70	21.70	8.25	8.25	8.25	32.52	32.52	32.56	72.9	70.9	69.9	5.30	5.15	5.08	9.35	9.38	9.36	10	9.50
	20:03		Middle	3.5	21.70	21.70		8.25	8.25		32.59	32.59		68.5	67.2		4.98	4.89		9.33	9.39		9	
18/4/18	19:46	Cloudy	Middle	2.5	22.40	22.40	22.40	8.08	8.08	8.08	32.84	32.84	32.84	70.2	70.4	70.5	5.02	5.06	5.05	4.31	4.28	4.10	8	10.50
	19:47		Middle	2.5	22.40	22.40		8.08	8.08		32.84	32.84		70.5	70.8		5.04	5.08		3.98	3.82		13	
20/4/18	10:50	Cloudy	Middle	3.0	22.80	22.80	22.80	8.22	8.22	8.22	32.64	32.64	32.64	79.7	79.8	79.7	5.68	5.69	5.68	10.41	10.38	10.37	10	10.00
	10:52		Middle	3.0	22.80	22.80		8.22	8.22		32.64	32.64		79.8	79.5		5.69	5.67		10.34	10.34		10	
23/4/18	11:05	Fine	Middle	3.0	24.70	24.70	24.70	8.11	8.11	8.11	32.27	32.27	32.27	80.8	81.1	81.3	5.61	5.61	5.62	4.85	4.90	4.91	5	4.50
	11:07		Middle	3.0	24.70	24.70		8.11	8.11		32.27	32.27		81.8	81.6		5.61	5.64		4.96	4.92		4	
25/4/18	12:05	Cloudy	Middle	2.5	23.50	23.50	23.55	8.14	8.14	8.14	32.15	32.15	32.15	80.6	80.6	80.6	5.70	5.68	5.69	6.82	6.99	6.85	6	5.50
	12:07		Middle	2.5	23.60	23.60		8.14	8.14		32.15	32.15		80.6	80.7		5.68	5.68		6.89	6.68		5	

Remarks:
Single underline denotes exceedance over Action Level.
Double underline denotes exceedance over Limit Level.



**Water Monitoring Result at P1 - HKCEC Phase I
Mid-Flood Tide**

Date	Time	Weater Condition	Sampling Depth m	Water Temperature °C			pH -			Salinity ppt			DO Saturation %		DO mg/L		Turbidity NTU		Suspended Solids mg/L					
				Value	Average		Value	Average		Value	Average		Value	Average	Value	Average	Value	Average	Value	Average				
28/3/18	15:00	Fine	Middle	3.0	22.80	22.80	22.95	8.10	8.10	8.10	31.78	31.78	31.78	84.5	84.8	84.7	6.04	6.06	6.04	5.34	5.38	5.42	6	5.50
	15:02		Middle	3.0	23.10	23.10		8.10	8.10		31.77	31.77		84.5	84.8		6.02	6.04		5.32	5.63		5	
30/3/18	17:11	Fine	Middle	2.5	20.80	20.80	20.80	8.11	8.11	8.11	31.85	31.85	31.85	76.2	77.3	76.1	5.37	5.45	5.37	6.45	6.97	6.71	5	4.50
	17:12		Middle	2.5	20.80	20.80		8.11	8.11		31.85	31.85		76.1	74.7		5.37	5.27		6.72	6.70		4	

Remarks:
Single underline denotes exceedance over Action Level.
Double underline denotes exceedance over Limit Level.



**Water Monitoring Result at P1 - HKCEC Phase I
Mid-Flood Tide**

Date	Time	Weather Condition	Sampling Depth		Water Temperature			pH			Salinity			DO Saturation		DO		Turbidity		Suspended Solids				
					°C			-			ppt			%		mg/L		NTU		mg/L				
			m	Value	Average	Value	Average	Value	Average	Value	Average	Value	Average	Value	Average	Value	Average	Value	Average	Value	Average	Value	Average	
3/4/18	7:25	Fine	Middle	3.0	22.40	22.40	22.45	8.00	8.00	8.03	31.34	31.34	31.34	73.8	73.9	74.0	5.33	5.34	5.35	7.03	7.00	6.99	4	4.00
	7:27		Middle	3.0	22.50	22.50		8.06	8.06		31.34	31.34		74.1	74.3		5.35	5.37		6.95	6.98		4	
5/4/18	9:20	Fine	Middle	2.5	25.10	25.10	25.10	8.14	8.14	8.14	32.02	32.02	32.02	75.7	76.3	74.8	5.21	5.26	5.15	2.68	2.91	2.75	7	6.50
	9:21		Middle	2.5	25.10	25.10		8.14	8.14		32.02	32.02		73.9	73.3		5.09	5.05		2.66	2.74		6	
7/4/18	9:50	Cloudy	Middle	3.0	20.10	20.10	20.05	8.29	8.29	8.29	32.63	32.63	32.64	84.2	84.5	84.1	6.31	6.34	6.31	6.63	6.65	6.65	2	2.50
	9:52		Middle	3.0	20.00	20.00		8.29	8.29		32.64	32.64		83.7	84.0		6.28	6.30		6.66	6.67		3	
10/4/18	3:55	Fine	Middle	3.0	22.50	22.50	22.50	8.12	8.12	8.12	33.18	33.18	33.18	80.7	82.0	81.2	5.67	5.76	5.71	1.83	1.33	1.43	6	5.00
	3:56		Middle	3.0	22.50	22.50		8.12	8.12		33.18	33.18		80.9	81.3		5.68	5.71		1.26	1.28		4	
12/4/18	15:44	Fine	Middle	3.5	24.70	24.70	24.70	8.13	8.13	8.14	32.64	32.64	32.64	62.5	62.7	63.0	4.31	4.33	4.35	5.31	5.31	5.31	4	3.50
	15:46		Middle	3.5	24.70	24.70		8.14	8.14		32.64	32.64		63.1	63.6		4.36	4.39		5.31	5.31		3	
14/4/18	15:56	Fine	Middle	3.5	25.30	25.30	25.30	8.13	8.13	8.14	32.19	32.19	32.21	73.5	74.8	74.4	5.03	5.12	5.09	5.49	5.49	5.53	4	5.00
	15:58		Middle	3.5	25.30	25.30		8.14	8.14		32.22	32.22		74.7	74.4		5.12	5.10		5.57	5.58		6	
16/4/18	19:45	Rainy	Middle	3.5	21.80	21.80	21.78	8.21	8.21	8.22	32.17	32.17	32.21	71.2	69.1	68.7	5.18	5.03	4.98	7.96	7.86	7.76	7	7.00
	19:47		Middle	3.5	21.80	21.70		8.22	8.22		32.25	32.25		67.2	67.3		4.81	4.90		7.62	7.60		7	
18/4/18	19:20	Cloudy	Middle	2.5	22.10	22.10	22.10	8.10	8.10	8.10	32.82	32.82	32.82	75.5	75.9	75.9	5.44	5.49	5.48	4.57	4.37	4.32	16	13.50
	19:21		Middle	2.5	22.10	22.10		8.10	8.10		32.82	32.82		75.7	76.3		5.46	5.51		4.19	4.14		11	
20/4/18	10:30	Cloudy	Middle	3.0	23.00	23.00	23.00	8.20	8.20	8.20	32.56	32.56	32.56	81.1	81.8	82.0	5.77	5.82	5.78	9.71	9.68	9.67	13	12.00
	10:32		Middle	3.0	23.00	23.00		8.20	8.20		32.56	32.56		82.5	82.5		5.86	5.66		9.64	9.63		11	
23/4/18	10:45	Fine	Middle	3.0	25.70	25.70	25.75	8.00	8.00	8.02	32.31	32.31	32.31	84.9	84.9	84.5	5.76	5.76	5.75	6.37	6.41	6.39	8	8.00
	10:47		Middle	3.0	25.80	25.80		8.03	8.03		32.30	32.30		83.6	84.4		5.73	5.73		6.41	6.38		8	
25/4/18	11:45	Cloudy	Middle	2.5	24.20	24.20	24.25	8.05	8.05	8.07	32.31	32.31	32.32	80.0	80.3	80.3	5.57	5.59	5.59	5.64	5.61	5.61	6	5.50
	11:47		Middle	2.5	24.30	24.30		8.08	8.08		32.32	32.32		80.4	80.5		5.59	5.60		5.60	5.59		5	

Remarks:
Single underline denotes exceedance over Action Level.
Double underline denotes exceedance over Limit Level.



**Water Monitoring Result at P3 - APA
Mid-Flood Tide**

Date	Time	Weater Condition	Sampling Depth		Water Temperature			pH			Salinity			DO Saturation		DO		Turbidity		Suspended Solids				
					°C			-			ppt			%		mg/L		NTU		mg/L				
			m	Value	Average	Value	Average	Value	Average	Value	Average	Value	Average	Value	Average	Value	Average	Value	Average	Value	Average			
28/3/18	15:05	Fine	Middle	3.0	22.00	22.00	22.05	8.12	8.12	8.12	31.76	31.76	31.76	77.3	77.6	78.0	5.62	5.64	5.66	5.38	5.29	5.34	5	4.50
	15:07		Middle	3.0	22.10	22.10		8.12	8.12		31.76	31.76		78.4	78.5		5.69	5.69		5.34	5.33		4	
30/3/18	17:16	Fine	Middle	2.5	20.90	20.90	20.90	8.11	8.11	8.11	31.84	31.84	31.84	71.7	72.9	72.2	5.04	5.12	5.07	3.78	3.68	3.72	5	5.00
	17:17		Middle	2.5	20.90	20.90		8.11	8.11		31.84	31.84		72.3	71.8		5.08	5.05		3.74	3.66		5	

Remarks:
Single underline denotes exceedance over Action Level.
Double underline denotes exceedance over Limit Level.



**Water Monitoring Result at P3 - APA
Mid-Flood Tide**

Date	Time	Weather Condition	Sampling Depth		Water Temperature			pH			Salinity		DO Saturation		DO		Turbidity		Suspended Solids					
					°C			-			ppt		%		mg/L		NTU		mg/L					
			m	Value	Average	Value	Average	Value	Average	Value	Average	Value	Average	Value	Average	Value	Average	Value	Average	Value	Average			
3/4/18	7:30	Fine	Middle	3.0	22.10	22.10	22.15	8.11	8.11	8.12	30.92	30.92	30.93	74.9	74.9	75.2	5.46	5.46	5.48	6.16	6.15	6.14	7	6.00
	7:32		Middle	3.0	22.20	22.20		8.12	8.12		30.93	30.93		75.2	75.8		5.48	5.52		6.12	6.11		5	
5/4/18	9:27	Fine	Middle	2.5	24.70	24.70	24.70	8.15	8.15	8.15	32.04	32.04	32.04	73.6	75.2	74.3	5.10	5.21	5.15	5.11	5.02	5.07	6	8.00
	9:28		Middle	2.5	24.70	24.70		8.15	8.15		32.04	32.04		74.4	74.1		5.15	5.13		5.09	5.07		10	
7/4/18	9:55	Cloudy	Middle	3.0	20.50	20.50	20.45	8.29	8.29	8.29	32.56	32.56	32.57	82.1	82.1	82.0	6.11	6.11	6.11	7.41	7.40	7.39	5	4.50
	9:57		Middle	3.0	20.40	20.40		8.29	8.29		32.58	32.58		82.0	81.9		6.11	6.10		7.38	7.37		4	
10/4/18	4:07	Fine	Middle	3.0	22.70	22.70	22.70	8.11	8.11	8.11	33.17	33.17	33.17	83.9	82.5	82.6	5.80	5.77	5.76	1.61	1.32	1.36	8	5.50
	4:08		Middle	3.0	22.70	22.70		8.11	8.11		33.17	33.17		81.2	82.9		5.68	5.79		1.27	1.23		3	
12/4/18	15:48	Fine	Middle	3.5	24.20	24.20	24.15	8.15	8.15	8.15	32.60	32.60	32.62	72.0	70.6	72.1	5.12	4.92	4.88	5.31	5.00	5.06	5	4.00
	15:50		Middle	3.5	24.10	24.10		8.15	8.15		32.64	32.64		78.9	67.0		4.80	4.67		4.96	4.95		3	
14/4/18	16:00	Fine	Middle	3.5	24.70	24.70	24.60	8.16	8.16	8.16	31.96	31.96	31.98	70.7	68.0	67.5	4.91	4.73	4.69	6.98	6.82	6.71	4	3.50
	16:02		Middle	3.5	24.50	24.50		8.16	8.16		31.99	31.99		66.1	65.2		4.59	4.53		6.57	6.47		3	
16/4/18	19:49	Rainy	Middle	3.5	21.40	21.40	21.40	8.22	8.22	8.22	32.34	32.34	32.35	72.0	70.7	69.7	5.27	5.17	5.10	8.79	8.80	8.78	7	7.50
	19:51		Middle	3.5	21.40	21.40		8.22	8.22		32.36	32.36		68.6	67.6		5.02	4.95		8.85	8.67		8	
18/4/18	19:25	Cloudy	Middle	2.5	22.00	22.00	22.00	8.10	8.10	8.10	32.80	32.80	32.80	78.4	79.2	78.7	5.67	5.72	5.69	3.38	3.11	3.57	7	8.50
	19:26		Middle	2.5	22.00	22.00		8.10	8.10		32.80	32.80		78.4	78.8		5.67	5.70		3.74	4.03		10	
20/4/18	10:35	Cloudy	Middle	3.0	22.90	22.90	22.90	8.21	8.21	8.21	32.54	32.54	32.55	81.1	81.1	81.0	5.78	5.78	5.77	9.75	9.68	9.72	13	12.50
	10:37		Middle	3.0	22.90	22.90		8.21	8.21		32.55	32.55		80.8	81.0		5.76	5.77		9.68	9.76		12	
23/4/18	10:50	Fine	Middle	3.0	24.80	24.80	24.85	8.07	8.07	8.07	32.27	32.27	32.27	82.6	82.6	82.8	5.70	5.70	5.71	5.74	5.69	5.69	8	7.50
	10:52		Middle	3.0	24.90	24.90		8.07	8.07		32.27	32.27		83.2	82.7		5.72	5.70		5.67	5.66		7	
25/4/18	11:50	Cloudy	Middle	2.5	23.80	23.80	23.85	8.12	8.12	8.12	32.16	32.16	32.16	79.6	80.1	80.4	5.59	5.62	5.64	5.39	5.59	5.54	5	4.50
	11:52		Middle	2.5	23.90	23.90		8.12	8.12		32.16	32.16		80.7	81.0		5.65	5.68		5.57	5.61		4	

Remarks:
Single underline denotes exceedance over Action Level.
Double underline denotes exceedance over Limit Level.



**Water Monitoring Result at P4 - SOC
Mid-Flood Tide**

Date	Time	Weater Condition	Sampling Depth m	Water Temperature °C		pH -		Salinity ppt		DO Saturation %		DO mg/L		Turbidity NTU		Suspended Solids mg/L								
				Value	Average	Value	Average	Value	Average	Value	Average	Value	Average	Value	Average	Value	Average							
				28/3/18	15:10	Fine	Middle	3.0	21.60	21.60	21.70	8.12	8.12	8.12	31.76	31.76	31.76	82.3	82.4	82.4	6.00	6.01	6.01	5.39
	15:12	Middle	3.0	21.80	21.80			8.12	8.12		31.76	31.76		82.3	82.4		6.00	6.01		5.39	5.24		4	
30/3/18	17:23	Fine	Middle	2.5	21.40	21.40	21.40	8.07	8.07	8.07	31.78	31.78	31.78	74.4	75.8	75.2	5.19	5.29	5.25	4.55	4.27	4.29	4	5.00
	17:24		Middle	1.5	21.40	21.40		8.07	8.07		31.78	31.78		75.9	74.7		5.30	5.22		4.19	4.13		6	

Remarks:
Single underline denotes exceedance over Action Level.
Double underline denotes exceedance over Limit Level.



**Water Monitoring Result at P4 - SOC
Mid-Flood Tide**

Date	Time	Weather Condition	Sampling Depth	m	Water Temperature			pH			Salinity			DO Saturation			DO			Turbidity			Suspended Solids		
					°C			-			ppt			%			mg/L			NTU			mg/L		
					Value	Average		Value	Average		Value	Average		Value	Average		Value	Average		Value	Average		Value	Average	
3/4/18	7:35	Fine	Middle	3.0	22.10	22.10	22.10	8.14	8.14	8.14	30.92	30.92	30.92	75.8	76.0	75.9	5.53	5.54	5.53	6.75	6.70	6.69	7	6.50	
	7:37		Middle	3.0	22.10	22.10		8.14	8.14		30.92	30.92		75.8	75.9		5.53	5.53		6.67	6.65		6		
5/4/18	9:32	Fine	Middle	2.5	24.90	24.90	24.90	8.14	8.14	8.14	32.00	32.00	32.00	74.4	76.4	74.8	5.13	5.27	5.16	6.05	5.69	5.84	9	9.50	
	9:33		Middle	2.5	24.90	24.90		8.14	8.14		31.99	31.99		74.5	73.8		5.14	5.09		5.74	5.88		10		
7/4/18	10:00	Cloudy	Middle	3.0	20.50	20.50	20.45	8.30	8.30	8.30	32.60	32.60	32.60	81.9	81.8	81.9	6.09	6.08	6.10	7.04	7.11	7.08	4	4.00	
	10:02		Middle	3.0	20.40	20.40		8.30	8.30		32.60	32.60		82.0	82.0		6.11	6.11		7.08	7.09		4		
10/4/18	4:13	Fine	Middle	3.0	22.80	22.80	22.80	8.11	8.11	8.11	33.17	33.17	33.17	82.7	81.9	82.3	5.78	5.72	5.75	1.05	1.18	1.10	3	3.00	
	4:14		Middle	3.0	22.80	22.80		8.11	8.11		33.17	33.17		81.9	82.6		5.73	5.78		1.08	1.10		3		
12/4/18	15:52	Fine	Middle	3.5	23.90	23.90	23.90	8.16	8.16	8.16	32.60	32.60	32.60	68.7	71.2	67.7	4.81	4.98	4.74	5.74	5.94	5.77	4	3.50	
	15:54		Middle	3.5	23.90	23.90		8.16	8.16		32.60	32.60		66.0	65.0		4.62	4.55		5.72	5.67		3		
14/4/18	16:04	Fine	Middle	3.5	24.50	24.50	24.40	8.17	8.17	8.17	30.98	30.98	31.48	72.2	70.1	70.1	5.04	4.89	4.89	5.69	6.24	5.96	4	4.00	
	16:06		Middle	3.5	24.30	24.30		8.17	8.17		31.97	31.97		68.6	69.6		4.79	4.85		6.13	5.76		4		
16/4/18	19:53	Rainy	Middle	3.5	21.70	21.70	21.75	8.22	8.22	8.23	32.35	32.35	32.41	71.9	69.1	68.8	5.22	5.02	5.00	9.32	9.46	9.32	7	7.50	
	19:55		Middle	3.5	21.80	21.80		8.23	8.23		32.47	32.47		67.6	66.4		4.92	4.83		9.26	9.25		8		
18/4/18	19:33	Cloudy	Middle	2.5	22.00	22.00	22.00	8.10	8.10	8.10	32.84	32.84	32.84	78.6	78.4	78.3	5.67	5.66	5.65	4.84	4.68	4.78	7	9.50	
	19:34		Middle	2.5	22.00	22.00		8.10	8.10		32.84	32.84		78.2	78.1		5.64	5.64		4.61	4.98		12		
20/4/18	10:40	Cloudy	Middle	3.0	22.80	22.80	22.80	8.21	8.21	8.21	32.57	32.57	32.57	81.2	80.8	80.9	5.79	5.77	5.78	9.92	9.90	9.90	15	14.00	
	10:42		Middle	3.0	22.80	22.80		8.21	8.21		32.57	32.57		80.8	80.8		5.77	5.77		9.89	9.87		13		
23/4/18	10:55	Fine	Middle	3.0	24.70	24.70	24.65	8.10	8.10	8.10	32.26	32.26	32.26	81.0	80.9	80.8	5.61	5.60	5.60	5.31	5.34	5.33	9	9.00	
	10:57		Middle	3.0	24.60	24.60		8.10	8.10		32.25	32.25		80.9	80.5		5.60	5.57		5.33	5.32		9		
25/4/18	11:55	Cloudy	Middle	2.5	23.50	23.50	23.50	8.13	8.13	8.13	32.14	32.14	32.15	81.1	81.4	80.9	5.73	5.75	5.71	5.82	5.80	5.77	9	8.00	
	11:57		Middle	2.5	23.50	23.50		8.13	8.13		32.16	32.16		80.6	80.6		5.68	5.69		5.74	5.73		7		

Remarks:
Single underline denotes exceedance over Action Level.
Double underline denotes exceedance over Limit Level.



**Water Monitoring Result at P5 - WCT / RT / IT
Mid-Flood Tide**

Date	Time	Weater Condition	Sampling Depth m	Water Temperature °C		pH -		Salinity ppt		DO Saturation %		DO mg/L		Turbidity NTU		Suspended Solids mg/L								
				Value	Average	Value	Average	Value	Average	Value	Average	Value	Average	Value	Average	Value	Average							
28/3/18	15:15	Fine	Middle	3.0	21.80	21.80	21.85	8.12	8.12	8.12	31.74	31.74	31.74	81.3	81.7	81.5	5.93	5.95	5.94	5.63	5.56	5.55	4	4.00
	15:17		Middle	3.0	21.90	21.90		8.12	8.12		31.74	31.74		81.4	81.5		5.93	5.94		5.52	5.49		4	
30/3/18	17:30	Fine	Middle	2.5	21.50	21.50	21.50	8.07	8.07	8.07	31.83	31.83	31.83	72.4	75.3	73.9	5.03	5.23	5.09	7.43	7.55	7.46	4	4.50
	17:31		Middle	2.5	21.50	21.50		8.07	8.07		31.83	31.83		74.7	73.0		5.07	5.03		7.47	7.40		5	

Remarks:
Single underline denotes exceedance over Action Level.
Double underline denotes exceedance over Limit Level.



**Water Monitoring Result at P5 - WCT / RT / IT
Mid-Flood Tide**

Date	Time	Weather Condition	Sampling Depth	m	Water Temperature			pH			Salinity			DO Saturation			DO			Turbidity			Suspended Solids	
					°C			-			ppt			%			mg/L			NTU			mg/L	
					Value	Average		Value	Average		Value	Average		Value	Average		Value	Average		Value	Average		Value	Average
3/4/18	7:40	Fine	Middle	3.0	22.10	22.10	22.10	8.15	8.15	8.15	30.94	30.94	30.94	75.9	76.1	76.0	5.53	5.55	5.54	6.18	6.16	6.12	7	6.50
	7:42		Middle	3.0	22.10	22.10		8.15	8.15		30.94	30.94		76.1	75.8		5.55	5.53		6.09	6.06		6	
5/4/18	9:39	Fine	Middle	2.5	24.60	24.60	24.60	8.13	8.13	8.13	31.92	31.92	31.92	76.3	77.4	76.1	5.30	5.37	5.28	3.65	3.60	3.47	6	7.00
	9:40		Middle	2.5	24.60	24.60		8.13	8.13		31.92	31.92		74.4	76.4		5.16	5.30		3.41	3.22		8	
7/4/18	10:05	Cloudy	Middle	3.0	20.60	20.60	20.65	8.30	8.30	8.30	32.46	32.46	32.53	82.7	83.0	82.6	6.12	6.15	6.12	8.81	8.82	8.84	11	10.50
	10:07		Middle	3.0	20.70	20.70		8.30	8.30		32.60	32.60		82.7	82.1		6.13	6.09		8.87	8.86		10	
10/4/18	4:22	Fine	Middle	3.0	22.70	22.70	22.70	8.12	8.12	8.12	33.21	33.21	33.21	81.7	83.2	81.9	5.71	5.81	5.71	1.61	1.31	1.42	6	5.50
	4:23		Middle	3.0	22.70	22.70		8.12	8.12		33.21	33.21		82.0	80.5		5.70	5.63		1.35	1.42		5	
12/4/18	15:56	Fine	Middle	3.5	23.80	23.80	23.85	8.16	8.16	8.16	32.47	32.47	32.53	71.6	71.8	72.3	5.02	5.03	5.07	6.82	6.59	6.78	4	4.00
	15:58		Middle	3.5	23.90	23.90		8.16	8.16		32.59	32.59		73.0	72.9		5.11	5.10		6.76	6.96		4	
14/4/18	16:08	Fine	Middle	3.5	24.40	24.40	24.30	8.17	8.17	8.18	30.21	30.21	31.07	75.8	71.0	69.4	5.30	4.96	4.86	5.51	5.61	5.60	4	4.00
	16:10		Middle	3.5	24.20	24.20		8.18	8.18		31.92	31.92		66.2	64.6		4.63	4.53		5.76	5.53		4	
16/4/18	19:57	Rainy	Middle	3.5	21.80	21.80	21.80	8.24	8.24	8.25	32.58	32.58	32.58	70.7	70.1	69.8	5.14	5.10	5.10	9.74	9.70	9.74	10	10.00
	19:59		Middle	3.5	21.80	21.80		8.25	8.25		32.58	32.58		69.6	68.8		5.06	5.10		9.79	9.74		10	
18/4/18	19:41	Cloudy	Middle	2.5	22.00	22.00	22.00	8.10	8.10	8.10	32.84	32.84	32.84	70.3	70.2	70.5	5.08	5.07	5.09	3.60	3.17	3.43	11	12.00
	19:42		Middle	2.5	22.00	22.00		8.10	8.10		32.84	32.84		70.8	70.5		5.12	5.09		3.28	3.66		13	
20/4/18	10:45	Cloudy	Middle	3.0	22.80	22.80	22.80	8.21	8.21	8.21	32.63	32.63	32.63	80.8	81.2	81.3	5.76	5.79	5.80	10.47	10.46	10.45	16	15.50
	10:47		Middle	3.0	22.80	22.80		8.21	8.21		32.63	32.63		81.5	81.5		5.81	5.82		10.44	10.43		15	
23/4/18	11:00	Fine	Middle	3.0	24.40	24.40	24.45	8.10	8.10	8.10	32.30	32.30	32.30	79.8	79.3	79.9	5.54	5.50	5.54	6.78	6.76	6.78	7	7.00
	11:02		Middle	3.0	24.50	24.50		8.10	8.10		32.30	32.30		79.9	80.5		5.54	5.58		6.77	6.79		7	
25/4/18	12:00	Cloudy	Middle	2.5	23.60	23.60	23.60	8.14	8.14	8.14	32.16	32.14	32.15	79.3	79.9	79.7	5.59	5.63	5.62	6.10	6.11	6.10	7	6.00
	12:02		Middle	2.5	23.60	23.60		8.14	8.14		32.15	32.15		79.8	79.9		5.62	5.63		6.11	6.09		5	

Remarks:
Single underline denotes exceedance over Action Level.
Double underline denotes exceedance over Limit Level.



**Water Monitoring Result at RW21-P789 - GEC / CRB / SHK
Mid-Flood Tide**

Date	Time	Weater Condition	Sampling Depth m	Water Temperature °C		pH -		Salinity ppt		DO Saturation %		DO mg/L		Turbidity NTU		Suspended Solids mg/L								
				Value	Average	Value	Average	Value	Average	Value	Average	Value	Average	Value	Average	Value	Average							
				28/3/18	15:40	Fine	Middle	4.0	21.90	21.90	21.95	8.13	8.13	8.13	31.74	31.74	31.74	83.9	83.9	84.0	6.10	6.10	6.11	5.91
15:42	Middle	4.0	22.00	22.00	21.95		8.13	8.13	8.13	31.74	31.74	31.74	84.1	84.1	84.0	6.11	6.11	6.11	5.87	5.88	5.88	6	6.50	
30/3/18	16:45	Fine	Middle	3.5	23.70	23.70	23.70	8.05	8.05	8.05	32.06	32.06	32.06	78.0	78.4	78.1	5.24	5.26	5.24	7.53	7.43	7.57	4	6.00
	16:46		Middle	3.5	23.70	23.70	23.70	8.05	8.05	8.05	32.06	32.06	32.06	78.2	77.8	78.1	5.24	5.22	5.24	7.69	7.64	7.57	8	6.00

Remarks:
Single underline denotes exceedance over Action Level.
Double underline denotes exceedance over Limit Level.



**Water Monitoring Result at RW21-P789 - GEC/CRB/SHK
Mid-Flood Tide**

Date	Time	Weather Condition	Sampling Depth m	Water Temperature °C		pH		Salinity ppt		DO Saturation %		DO mg/L		Turbidity NTU		Suspended Solids mg/L								
				Value	Average	Value	Average	Value	Average	Value	Average	Value	Average	Value	Average	Value	Average							
3/4/18	8:05	Fine	Middle	4.0	22.20	22.20	21.78	8.17	8.17	8.17	31.00	31.00	31.01	78.5	78.2	78.3	5.71	5.69	5.69	8.56	8.56	8.58	9	9.50
	8:07		Middle	4.0	22.30	20.40	21.78	8.17	8.17	8.17	31.01	31.01	31.01	78.1	78.3	78.3	5.67	5.69	5.69	8.59	8.62	8.58	10	
5/4/18	11:00	Fine	Middle	4.0	23.90	23.90	23.90	8.09	8.09	8.09	31.80	31.80	31.80	71.5	70.9	71.3	5.01	4.97	5.00	2.61	2.32	2.41	6	6.00
	11:01		Middle	4.0	23.90	23.90	23.90	8.09	8.09	8.09	31.80	31.80	31.80	71.6	71.3	71.3	5.01	4.99	5.00	2.43	2.26	2.41	6	
7/4/18	8:15	Cloudy	Middle	3.5	20.90	20.90	20.85	8.13	8.13	8.16	32.27	32.27	32.28	84.1	84.1	84.1	6.23	6.23	6.23	8.40	6.42	6.97	4	3.50
	8:17		Middle	3.5	20.80	20.80	20.85	8.18	8.18	8.16	32.28	32.28	32.28	83.9	84.1	84.1	6.22	6.24	6.23	6.51	6.53	6.97	3	
10/4/18	4:37	Fine	Middle	4.0	22.10	22.10	22.10	8.10	8.10	8.10	33.29	33.29	33.29	81.4	81.6	80.9	5.73	5.76	5.70	1.07	1.10	1.13	4	4.00
	4:38		Middle	4.0	22.10	22.10	22.10	8.10	8.10	8.10	33.29	33.29	33.29	80.3	80.2	80.9	5.65	5.65	5.70	1.15	1.20	1.13	4	
12/4/18	16:15	Fine	Middle	3.5	23.80	23.80	23.80	8.14	8.15	8.15	32.65	32.65	32.64	70.9	69.3	68.8	4.97	4.85	4.82	5.69	5.44	5.50	3	3.50
	16:17		Middle	3.5	23.80	23.80	23.80	8.16	8.16	8.15	32.63	32.63	32.64	68.3	66.6	68.8	4.78	4.66	4.82	5.44	5.44	5.50	4	
14/4/18	16:25	Fine	Middle	3.5	24.30	24.30	24.30	8.18	8.18	8.18	32.18	32.18	32.15	71.1	70.1	70.0	4.95	4.88	4.87	6.47	6.42	6.43	5	5.00
	16:27		Middle	3.5	24.30	24.30	24.30	8.18	8.18	8.18	32.11	32.11	32.15	69.6	69.0	70.0	4.84	4.80	4.87	6.41	6.42	6.43	5	
16/4/18	19:14	Rainy	Middle	3.5	22.30	22.30	22.30	8.15	8.15	8.17	32.31	32.31	32.32	66.5	64.5	64.4	4.79	4.65	4.64	8.57	8.59	8.62	7	7.00
	19:16		Middle	3.5	22.30	22.30	22.30	8.18	8.18	8.17	32.32	32.32	32.32	63.6	62.9	64.4	4.58	4.53	4.64	8.64	8.67	8.62	7	
18/4/18	20:12	Cloudy	Middle	3.5	22.50	22.50	22.50	8.08	8.08	8.08	32.86	32.86	32.86	71.0	73.4	72.3	5.18	5.36	5.23	4.49	4.31	4.38	9	10.50
	20:13		Middle	3.5	22.50	22.50	22.50	8.08	8.08	8.08	32.86	32.86	32.86	72.7	72.0	72.3	5.21	5.16	5.23	4.24	4.49	4.38	12	
20/4/18	8:20	Cloudy	Middle	4.0	23.40	23.40	23.45	8.10	8.10	8.13	32.74	32.74	32.74	81.6	81.5	81.4	5.74	5.73	5.73	9.10	9.16	9.12	12	12.00
	8:22		Middle	4.0	23.50	23.50	23.45	8.15	8.15	8.13	32.74	32.74	32.74	81.0	81.5	81.4	5.70	5.74	5.73	9.11	9.10	9.12	12	
23/4/18	11:25	Fine	Middle	4.0	24.40	24.40	24.50	8.10	8.10	8.10	32.35	32.35	32.35	77.5	77.5	77.3	5.37	5.36	5.35	7.81	7.86	7.84	9	9.00
	11:27		Middle	4.0	24.60	24.60	24.50	8.10	8.10	8.10	32.34	32.34	32.35	77.3	77.0	77.3	5.35	5.33	5.35	7.85	7.85	7.84	9	
25/4/18	12:20	Cloudy	Middle	4.0	23.90	23.90	23.90	8.15	8.15	8.16	32.31	32.31	32.31	83.2	83.4	83.3	5.83	5.84	5.83	6.51	6.50	6.30	8	7.50
	12:22		Middle	4.0	23.90	23.90	23.90	8.16	8.16	8.16	32.30	32.30	32.31	83.2	83.2	83.3	5.83	5.83	5.83	6.56	5.62	6.30	7	

Remarks:
Single underline denotes exceedance over Action Level.
Double underline denotes exceedance over Limit Level.



**Water Monitoring Result at WSD19 - Sheung Wan
Mid-Flood Tide**

Date	Time	Weater Condition	Sampling Depth m	Water Temperature °C		pH -		Salinity ppt		DO Saturation %		DO mg/L		Turbidity NTU		Suspended Solids mg/L								
				Value	Average	Value	Average	Value	Average	Value	Average	Value	Average	Value	Average	Value	Average							
				28/3/18	13:50	Fine	Middle	4.0	22.40	22.40	22.50	8.28	8.28	8.25	32.18	32.18	32.19	77.7	77.9	78.1	5.58	5.59	5.62	9.40
13:52	Middle	4.0	22.60	22.60	22.50		8.22	8.22	8.25	32.20	32.20	32.19	78.1	78.5	78.1	5.69	5.63	5.62	9.36	9.36	9.37	8	8.00	
30/3/18	18:45	Fine	Middle	3.5	22.70	22.60	22.63	8.02	8.02	8.02	30.87	30.87	30.87	75.4	75.4	76.0	5.17	5.16	5.20	1.57	1.38	1.39	7	6.50
18:46	Middle		3.5	22.60	22.60	22.63	8.02	8.02	8.02	30.87	30.87	30.87	77.2	75.8	76.0	5.26	5.19	5.20	1.21	1.39	1.39	6	6.50	

Remarks:
Single underline denotes exceedance over Action Level.
Double underline denotes exceedance over Limit Level.



**Water Monitoring Result at WSD19 - Sheung Wan
Mid-Flood Tide**

Date	Time	Weather Condition	Sampling Depth m	Water Temperature °C			pH			Salinity ppt			DO Saturation %		DO mg/L		Turbidity NTU		Suspended Solids mg/L					
				Value	Average		Value	Average		Value	Average		Value	Average	Value	Average	Value	Average	Value	Average				
3/4/18	9:00	Fine	Middle	4.0	22.70	22.70	22.80	8.13	8.13	8.13	31.21	31.21	31.22	83.1	83.5	83.0	5.97	6.00	5.96	7.71	7.65	7.67	11	10.00
	9:02		Middle	4.0	22.90	22.90		8.13	8.13		31.22	31.22		82.5	82.9		5.92	5.95		7.65	7.65		9	
5/4/18	8:20	Fine	Middle	3.5	25.20	25.20	25.20	8.13	8.13	8.13	32.02	32.02	32.02	74.8	75.3	74.6	5.15	5.18	5.13	8.32	8.11	8.07	11	11.50
	8:21		Middle	3.5	25.20	25.20		8.13	8.13		32.02	32.02		74.7	73.5		5.14	5.06		7.98	7.87		12	
7/4/18	9:00	Cloudy	Middle	4.0	20.90	20.90	20.80	8.21	8.21	8.23	32.24	32.24	32.32	84.9	85.0	84.7	6.29	6.30	6.28	8.56	8.57	8.54	10	9.50
	9:02		Middle	4.0	20.70	20.70		8.24	8.24		32.39	32.39		84.3	84.4		6.26	6.27		8.56	8.45		9	
10/4/18	2:30	Fine	Middle	3.5	22.20	22.20	22.20	8.06	8.06	8.06	33.07	33.07	33.07	77.2	78.5	77.7	5.54	5.63	5.53	2.86	2.72	2.78	5	5.00
	2:31		Middle	3.5	22.20	22.20		8.06	8.06		33.07	33.07		78.1	77.1		5.60	5.35		2.70	2.82		5	
12/4/18	14:55	Fine	Middle	3.5	24.40	24.40	24.65	8.05	8.05	8.08	32.65	32.54	32.56	74.4	73.0	73.1	5.12	5.03	5.04	6.59	6.50	6.48	4	4.50
	14:57		Middle	3.5	24.90	24.90		8.10	8.10		32.52	32.52		72.6	72.2		5.01	4.99		6.42	6.42		5	
14/4/18	17:12	Fine	Middle	3.5	24.30	24.30	24.45	8.06	8.06	8.09	32.09	32.09	32.10	70.8	70.1	69.2	4.92	4.86	4.80	8.61	8.59	8.51	7	8.00
	17:14		Middle	3.5	24.60	24.60		8.12	8.12		32.10	32.10		68.8	67.2		4.77	4.65		8.43	8.41		9	
16/4/18	18:08	Rainy	Middle	3.5	22.20	22.20	22.20	8.14	8.14	8.16	32.16	32.16	32.18	65.4	63.7	63.3	4.72	4.60	4.57	9.52	9.53	9.47	11	10.50
	18:10		Middle	3.5	22.20	22.20		8.18	8.18		32.20	32.20		62.2	61.7		4.49	4.46		9.42	9.41		10	
18/4/18	18:00	Cloudy	Middle	3.5	22.90	22.90	22.90	7.99	7.99	7.99	32.22	32.22	32.22	76.1	76.4	77.5	5.43	5.47	5.53	8.84	8.94	8.85	21	<u>20.50</u>
	18:01		Middle	3.5	22.90	22.90		7.99	7.99		32.22	32.22		79.3	78.3		5.65	5.58		8.79	8.81		20	
20/4/18	9:10	Cloudy	Middle	4.0	23.00	23.00	23.10	8.12	8.19	8.16	32.38	31.76	32.07	81.3	81.4	80.8	5.77	5.78	5.74	9.43	9.37	9.41	13	12.50
	9:12		Middle	4.0	23.20	23.20		8.15	8.19		32.37	31.75		80.1	80.5		5.69	5.71		9.41	9.44		12	
23/4/18	13:05	Fine	Middle	4.0	25.10	25.10	25.25	8.13	8.19	8.16	32.50	32.50	32.50	79.5	79.3	79.3	5.43	5.41	5.41	9.63	9.60	9.61	10	11.00
	13:07		Middle	4.0	25.40	25.40		8.11	8.19		32.49	32.49		79.1	79.4		5.39	5.41		9.61	9.61		12	
25/4/18	14:25	Cloudy	Middle	4.0	24.00	24.00	24.00	8.14	8.14	8.14	32.10	32.10	32.10	76.3	76.8	76.5	5.36	5.37	5.36	7.35	7.34	7.39	6	5.00
	14:27		Middle	4.0	24.00	24.00		8.14	8.14		32.10	32.10		76.5	76.5		5.36	5.36		7.41	7.47		4	

Remarks:
Single underline denotes exceedance over Action Level.
Double underline denotes exceedance over Limit Level.



**Water Monitoring Result at C7 - Windsor House
Mid-Ebb Tide**

Date	Time	Weather Condition	Sampling Depth		Water Temperature		pH			Salinity			DO Saturation		DO		Turbidity		Suspended Solids					
					°C		-			ppt			%		mg/L		NTU		mg/L					
					Value	Average	Value	Average	Value	Average	Value	Average	Value	Average	Value	Average	Value	Average	Value	Average				
28/3/18	21:30	Cloudy	Middle	-	21.50	21.50	21.50	8.06	8.06	8.06	32.21	32.21	32.21	80.7	80.1	80.8	5.90	5.85	5.91	1.48	1.27	1.38	4	6.00
	21:31		Middle	-	21.50	21.50		8.06	8.06	8.06	32.21	32.21		81.0	81.3		5.96	5.94		5.91	1.40		1.37	
30/3/18	13:45	Fine	Middle	-	23.00	23.00	23.00	8.02	8.02	8.02	32.02	32.02	32.02	73.5	77.4	75.6	4.98	5.25	5.12	1.09	1.13	1.13	7	7.50
	13:46		Middle	-	23.00	23.00		8.02	8.02	8.02	32.02	32.02		76.2	75.3		5.16	5.10		5.12	1.18		1.12	

Remarks:
 Single underline denotes exceedance over Action Level.
 Double underline denotes exceedance over Limit Level.



**Water Monitoring Result at C7 - Windsor House
Mid-Ebb Tide**

Date	Time	Weather Condition	Sampling Depth		Water Temperature		pH			Salinity		DO Saturation		DO		Turbidity		Suspended Solids						
					°C		-			ppt		%		mg/L		NTU		mg/L						
					Value	Average	Value	Average	Value	Average	Value	Average	Value	Average	Value	Average	Value	Average	Value	Average				
3/4/18	11:40	Fine	Middle	-	24.40	24.40	24.55	8.11	8.11	8.10	31.30	31.30	31.30	82.4	82.5	82.3	5.73	5.74	5.72	4.80	4.84	4.78	4	4.00
	11:42		Middle	-	24.70	24.70		8.08	8.08		31.30	31.30		82.0	82.1		5.70	5.71		4.75	4.71		4	
5/4/18	12:50	Fine	Middle	-	25.40	25.40	25.40	8.08	8.08	8.08	31.73	31.73	31.73	74.2	74.7	75.0	5.08	5.11	5.13	1.89	1.49	1.68	7	6.00
	12:51		Middle	-	25.40	25.40		8.08	8.08		31.73	31.73		75.5	75.4		5.17	5.16		1.68	1.64		5	
7/4/18	17:30	Cloudy	Middle	-	21.90	21.90	21.85	8.27	8.27	8.27	32.34	32.34	32.35	85.2	85.7	85.3	6.19	6.23	6.20	6.78	6.77	6.76	5	5.50
	17:32		Middle	-	21.80	21.80		8.26	8.26		32.35	32.35		85.2	85.1		6.19	6.19		6.76	6.73		6	
10/4/18	22:10	Cloudy	Middle	-	24.90	24.90	24.90	8.03	8.03	8.03	33.13	33.13	33.13	78.0	78.2	77.9	5.35	5.36	5.34	1.32	1.30	1.34	3	3.00
	22:11		Middle	-	24.90	24.90		8.03	8.03		33.13	33.13		78.1	77.1		5.35	5.29		1.37	1.35		<2	
12/4/18	22:45	Cloudy	Middle	-	23.70	23.70	23.70	7.88	7.88	7.88	32.14	32.14	32.14	73.4	73.8	73.8	5.15	5.18	5.18	1.14	1.14	1.11	5	4.50
	22:46		Middle	-	23.70	23.70		7.88	7.88		32.14	32.14		74.4	73.6		5.22	5.16		1.05	1.10		4	
14/4/18	11:07	Fine	Middle	-	24.80	24.80	24.85	8.11	8.11	8.11	32.43	32.43	32.38	65.9	65.3	65.2	4.54	4.50	4.49	6.36	6.34	6.28	6	5.00
	11:09		Middle	-	24.90	24.90		8.11	8.11		32.32	32.32		65.2	64.4		4.49	4.42		6.26	6.16		4	
16/4/18	10:29	Cloudy	Middle	-	22.60	22.60	22.60	8.11	8.11	8.12	32.29	32.29	32.29	69.7	69.7	69.1	5.00	4.99	4.95	6.52	6.51	6.51	3	4.00
	10:31		Middle	-	22.60	22.60		8.13	8.13		32.28	32.28		68.9	67.9		4.94	4.87		6.52	6.49		5	
18/4/18	15:59	Fine	Middle	-	23.70	23.70	23.70	8.18	8.18	8.18	32.54	32.54	32.54	61.9	61.9	61.5	4.35	4.34	4.35	8.65	8.65	8.64	8	7.00
	16:01		Middle	-	23.70	23.70		8.18	8.18		32.54	32.54		62.1	60.2		4.36	4.36		8.63	8.63		6	
20/4/18	13:45	Cloudy	Middle	-	23.90	23.90	23.95	8.15	8.15	8.15	32.47	32.47	32.47	80.1	80.2	80.1	5.60	5.61	5.60	6.36	6.28	6.31	6	6.50
	13:47		Middle	-	24.00	24.00		8.15	8.15		32.46	32.46		79.7	80.2		5.57	5.61		6.29	6.29		7	
23/4/18	19:20	Cloudy	Middle	-	25.40	25.40	25.40	8.00	8.00	8.00	32.70	32.70	32.70	78.8	79.3	77.8	5.37	5.40	5.30	2.03	1.98	1.93	9	8.50
	19:21		Middle	-	25.40	25.40		8.00	8.00		32.70	32.70		76.8	76.3		5.23	5.19		1.82	1.90		8	
25/4/18	22:15	Cloudy	Middle	-	24.10	24.10	24.10	8.00	8.00	8.00	32.75	32.75	32.75	77.5	77.9	77.5	5.39	5.42	5.39	1.18	1.10	1.10	3	6.50
	22:16		Middle	-	24.10	24.10		8.00	8.00		32.75	32.75		77.5	77.2		5.39	5.37		1.08	1.02		10	

Remarks:
 Single underline denotes exceedance over Action Level.
 Double underline denotes exceedance over Limit Level.



**Water Monitoring Result at C1 - HKCEC
Mid-Ebb Tide**

Date	Time	Weater Condition	Sampling Depth		Water Temperature		pH			Salinity			DO Saturation		DO		Turbidity		Suspended Solids					
					°C		-		ppt		%		mg/L		NTU		mg/L							
			m	Value	Average	Value	Average	Value	Average	Value	Average	Value	Average	Value	Average	Value	Average	Value	Average					
28/3/18	22:35	Cloudy	Middle	3.0	21.40	21.40	21.40	8.11	8.11	8.11	32.37	32.37	32.37	74.8	75.8	76.2	5.48	5.56	5.58	1.22	1.42	1.32	5	5.50
	22:36		Middle	3.0	21.40	21.40		8.11	8.11		32.37	32.37		77.5	76.6		5.68	5.61		1.39	1.25		6	
30/3/18	13:11	Fine	Middle	3.0	21.00	21.00	21.00	8.00	8.00	8.00	31.68	31.68	31.68	70.5	70.3	71.8	4.95	4.93	5.04	1.64	1.15	1.30	7	6.50
	13:12		Middle	3.0	21.00	21.00		8.00	8.00		31.68	31.68		73.9	72.6		5.19	5.10		1.23	1.17		6	

Remarks:
Single underline denotes exceedance over Action Level.
Double underline denotes exceedance over Limit Level.



**Water Monitoring Result at C1 - HKCEC
Mid-Ebb Tide**

Date	Time	Weather Condition	Sampling Depth		Water Temperature			pH			Salinity			DO Saturation			DO			Turbidity			Suspended Solids	
					°C		-		ppt		%		mg/L		NTU		mg/L							
					Value	Average	Value	Average	Value	Average	Value	Average	Value	Average	Value	Average	Value	Average	Value	Average	Value	Average		
3/4/18	13:35	Fine	Middle	2.5	23.10	23.10	23.15	8.13	8.13	8.13	31.21	31.21	31.21	79.1	79.5	79.7	5.65	5.68	5.69	7.08	7.10	7.07	4	5.00
	13:37		Middle	2.5	23.20	23.20		8.13	8.13	8.13	31.21	31.21		79.9	80.1		5.70	5.71		7.04	7.06		6	
5/4/18	14:13	Fine	Middle	3.0	24.80	24.80	24.80	8.15	8.15	8.15	32.09	32.09	32.09	72.0	70.8	71.3	5.04	4.95	4.99	4.56	4.95	4.57	6	7.00
	14:14		Middle	3.0	24.80	24.80		8.15	8.15	8.15	32.09	32.09		71.5	70.8		5.00	4.96		4.37	4.39		8	
7/4/18	15:20	Cloudy	Middle	3.0	21.00	21.00	21.00	8.32	8.32	8.33	32.85	32.85	32.86	84.3	84.2	84.6	6.20	6.20	6.19	7.03	7.09	7.08	6	6.50
	15:22		Middle	3.0	21.00	21.00		8.33	8.33	8.33	32.86	32.86		85.6	84.2		6.16	6.20		7.10	7.10		7	
10/4/18	21:30	Cloudy	Middle	2.5	24.40	24.40	24.40	8.08	8.08	8.08	33.28	33.28	33.28	76.0	78.7	77.3	5.25	5.44	5.34	1.64	1.46	1.39	5	8.00
	21:31		Middle	2.5	24.40	24.40		8.08	8.08	8.08	33.28	33.28		78.5	76.0		5.43	5.23		1.20	1.26		11	
12/4/18	21:03	Cloudy	Middle	3.0	23.00	23.00	23.00	8.03	8.03	8.03	33.19	33.19	33.19	76.7	77.4	77.3	5.17	5.21	5.21	1.57	1.91	1.78	4	4.50
	21:04		Middle	3.0	23.00	23.00		8.03	8.03	8.03	33.19	33.19		78.1	77.0		5.26	5.18		1.86	1.79		5	
14/4/18	10:36	Fine	Middle	3.5	24.70	24.70	24.70	8.15	8.15	8.15	32.40	32.40	32.42	65.3	64.9	64.3	4.51	4.49	4.45	7.86	7.91	7.95	4	5.00
	10:38		Middle	3.5	24.70	24.70		8.15	8.15	8.15	32.44	32.44		64.1	63.0		4.43	4.35		7.83	8.19		6	
16/4/18	14:59	Cloudy	Middle	3.5	22.20	22.20	22.25	8.23	8.23	8.23	32.34	32.34	32.36	70.0	68.4	67.9	5.04	4.92	4.88	7.34	7.49	7.54	5	4.00
	15:01		Middle	3.5	22.30	22.30		8.23	8.23	8.23	32.37	32.37		67.1	66.2		4.83	4.71		7.73	7.61		3	
18/4/18	15:01	Fine	Middle	3.5	23.10	23.10	23.10	8.20	8.20	8.20	32.56	32.56	32.56	66.2	65.8	65.4	4.70	4.67	4.65	8.91	8.85	8.85	7	7.50
	15:03		Middle	3.5	23.10	23.10		8.20	8.20	8.20	32.56	32.56		65.2	64.5		4.63	4.58		8.82	8.81		8	
20/4/18	15:50	Cloudy	Middle	3.0	23.00	23.00	23.00	8.21	8.21	8.21	32.48	32.48	32.49	79.6	79.8	79.7	5.66	5.68	5.67	8.34	8.34	8.32	8	8.50
	15:52		Middle	3.0	23.00	23.00		8.21	8.21	8.21	32.49	32.49		79.4	79.9		5.65	5.68		8.30	8.29		9	
23/4/18	18:37	Cloudy	Middle	3.0	25.30	25.30	25.30	8.03	8.03	8.03	32.48	32.48	32.48	80.7	82.1	81.0	5.52	5.60	5.54	4.82	4.14	4.63	7	7.00
	18:38		Middle	3.0	25.30	25.30		8.03	8.03	8.03	32.48	32.48		80.0	81.2		5.47	5.55		4.80	4.75		7	
25/4/18	21:37	Cloudy	Middle	2.5	23.90	23.90	23.90	8.10	8.10	8.10	33.32	33.32	33.32	79.0	79.9	79.0	5.50	5.56	5.49	1.17	1.20	1.16	5	4.00
	21:38		Middle	2.5	23.90	23.90		8.10	8.10	8.10	33.32	33.32		78.7	78.2		5.48	5.43		1.15	1.10		3	

Remarks:
Single underline denotes exceedance over Action Level.
Double underline denotes exceedance over Limit Level.



**Water Monitoring Result at P1 - HKCEC Phase I
Mid-Ebb Tide**

Date	Time	Weather Condition	Sampling Depth		Water Temperature		pH		Salinity		DO Saturation		DO		Turbidity		Suspended Solids							
					°C		-		ppt		%		mg/L		NTU		mg/L							
			m	Value	Average	Value	Average	Value	Average	Value	Average	Value	Average	Value	Average	Value	Average	Value	Average					
28/3/18	22:10	Cloudy	Middle	3.0	21.50	21.50	21.50	8.13	8.13	8.13	32.34	32.34	32.34	79.6	81.7	81.4	5.82	5.98	5.95	2.19	2.34	2.27	5	6.00
	22:11		Middle	3.0	21.50	21.50		8.13	8.13		32.34	32.34		82.3	81.8		6.02	5.98		2.26	2.30		7	
30/3/18	12:30	Fine	Middle	3.0	20.60	20.60	20.60	8.10	8.10	8.10	31.83	31.83	31.83	75.1	74.5	74.5	5.30	5.26	5.26	1.58	1.51	1.49	5	4.00
	12:31		Middle	3.0	20.60	20.60		8.10	8.10		31.83	31.83		74.2	74.3		5.24	5.24		1.45	1.40		3	

Remarks:
 Single underline denotes exceedance over Action Level.
 Double underline denotes exceedance over Limit Level.



**Water Monitoring Result at P1 - HKCEC Phase I
Mid-Ebb Tide**

Date	Time	Weather Condition	Sampling Depth		Water Temperature		pH			Salinity		DO Saturation		DO		Turbidity		Suspended Solids						
					°C		-			ppt		%		mg/L		NTU		mg/L						
					Value	Average	Value	Average	Value	Average	Value	Average	Value	Average	Value	Average	Value	Average	Value	Average				
3/4/18	13:15	Fine	Middle	2.5	24.80	24.80	24.95	8.15	8.15	8.14	31.32	31.32	31.32	82.5	82.9	82.6	5.69	5.72	5.68	6.32	6.35	6.30	5	5.50
	13:17		Middle	2.5	25.10	25.10		8.13	8.13		31.32	31.32		82.3	82.6		5.67	5.64		6.28	6.25		6	
5/4/18	13:46	Fine	Middle	3.0	25.30	25.30	25.30	8.14	8.14	8.14	32.01	32.01	32.01	72.2	74.0	73.2	4.99	5.09	5.03	4.52	4.70	4.60	10	9.00
	13:47		Middle	3.0	25.30	25.30		8.14	8.14		32.01	32.01		74.1	72.4		5.09	4.96		4.66	4.51		8	
7/4/18	15:00	Cloudy	Middle	3.0	20.60	20.60	20.60	8.33	8.33	8.33	32.85	32.85	32.85	85.8	86.1	85.7	6.36	6.37	6.35	7.27	7.27	7.23	5	5.00
	15:02		Middle	3.0	20.60	20.60		8.33	8.33		32.85	32.85		85.3	85.6		6.32	6.34		7.19	7.17		5	
10/4/18	20:56	Cloudy	Middle	2.5	24.20	24.20	24.20	8.09	8.09	8.09	33.27	33.27	33.27	77.9	78.1	77.5	5.40	5.41	5.37	1.35	1.86	1.43	7	6.50
	20:57		Middle	2.5	24.20	24.20		8.09	8.09		33.27	33.27		76.8	77.2		5.32	5.35		1.22	1.29		6	
12/4/18	20:35	Cloudy	Middle	3.0	22.90	22.90	22.90	8.03	8.03	8.03	33.16	33.16	33.16	78.2	79.6	78.3	5.27	5.37	5.28	1.81	1.74	1.71	8	8.50
	20:36		Middle	3.0	22.90	22.90		8.03	8.03		33.16	33.16		78.1	77.4		5.27	5.22		1.68	1.62		9	
14/4/18	10:20	Fine	Middle	3.5	24.80	24.80	25.05	7.99	7.99	8.03	32.68	32.68	32.57	69.5	67.6	67.6	4.77	4.63	4.63	6.54	6.49	6.48	4	4.50
	10:22		Middle	3.5	25.30	25.30		8.07	8.07		32.46	32.46		67.1	66.0		4.60	4.52		6.45	6.44		5	
16/4/18	14:43	Cloudy	Middle	3.5	22.70	22.70	22.35	8.13	8.13	8.15	32.46	32.46	32.45	73.8	72.6	72.4	5.35	5.27	5.25	6.43	6.43	6.43	6	6.00
	14:45		Middle	3.5	22.00	22.00		8.17	8.17		32.44	32.44		72.3	70.8		5.24	5.14		6.43	6.43		6	
18/4/18	14:45	Fine	Middle	3.5	23.60	23.60	23.70	8.18	8.18	8.19	32.63	32.63	32.61	60.9	60.7	60.7	4.28	4.26	4.26	8.89	8.89	8.89	7	7.50
	14:47		Middle	3.5	23.80	23.80		8.19	8.19		32.59	32.59		60.6	60.5		4.25	4.25		8.89	8.90		8	
20/4/18	15:30	Cloudy	Middle	3.0	23.10	23.10	23.15	8.19	8.19	8.20	32.54	32.54	32.54	78.3	78.2	78.2	5.55	5.55	5.55	8.24	8.26	8.26	9	8.00
	15:32		Middle	3.0	23.20	23.20		8.20	8.20		32.54	32.54		78.1	78.1		5.54	5.54		8.27	8.28		7	
23/4/18	18:03	Cloudy	Middle	3.0	25.50	25.50	25.50	8.07	8.07	8.07	32.54	32.54	32.54	78.9	79.2	79.2	5.38	5.39	5.40	3.65	3.51	3.57	7	7.00
	18:04		Middle	3.0	25.50	25.50		8.07	8.07		32.54	32.54		80.6	78.1		5.49	5.32		3.53	3.60		7	
25/4/18	21:10	Cloudy	Middle	2.5	23.90	23.90	23.90	8.12	8.12	8.12	33.29	33.29	33.29	77.8	78.2	78.4	5.42	5.44	5.46	1.16	1.14	1.11	6	6.00
	21:11		Middle	2.5	23.90	23.90		8.12	8.12		33.29	33.29		78.5	79.0		5.47	5.50		1.04	1.11		<2	

Remarks:
Single underline denotes exceedance over Action Level.
Double underline denotes exceedance over Limit Level.



**Water Monitoring Result at P3 - APA
Mid-Ebb Tide**

Date	Time	Weater Condition	Sampling Depth		Water Temperature		pH			Salinity			DO Saturation		DO		Turbidity		Suspended Solids					
					°C		-			ppt			%		mg/L		NTU		mg/L					
					Value	Average	Value	Average	Value	Average	Value	Average	Value	Average	Value	Average	Value	Average	Value	Average				
28/3/18	22:16	Cloudy	Middle	3.0	21.30	21.30	21.32	8.14	8.14	8.14	32.36	32.36	32.36	78.5	79.8	79.2	5.76	5.84	5.81	2.87	2.76	2.79	7	6.00
	22:17		Middle	3.0	21.30	21.38		8.14	8.14		32.36	32.36		80.0	78.4		5.87	5.76		2.79	2.72		5	
30/3/18	12:37	Fine	Middle	3.0	20.70	20.70	20.70	8.11	8.11	8.11	31.84	31.84	31.84	66.8	69.8	69.6	4.71	4.92	4.91	1.17	1.15	1.13	8	7.00
	12:38		Middle	3.0	20.70	20.70		8.11	8.11		31.84	31.84		71.0	70.8		5.01	4.99		1.08	1.10		6	

Remarks:
Single underline denotes exceedance over Action Level.
Double underline denotes exceedance over Limit Level.



**Water Monitoring Result at P3 - APA
Mid-Ebb Tide**

Date	Time	Weather Condition	Sampling Depth		Water Temperature		pH			Salinity		DO Saturation		DO		Turbidity		Suspended Solids						
					°C		-			ppt		%		mg/L		NTU		mg/L						
					Value	Average	Value	Average	Value	Average	Value	Average	Value	Average	Value	Average	Value	Average	Value	Average				
3/4/18	13:20	Fine	Middle	2.5	23.80	23.80	23.90	8.13	8.13	8.13	31.25	31.25	31.25	82.8	83.3	82.9	5.84	5.87	5.84	6.61	6.63	6.62	6	5.00
	13:22		Middle	2.5	24.00	24.00		8.12	8.12	8.12	31.25	31.25		82.6	82.9		5.81	5.84		6.63	6.62		4	
5/4/18	13:51	Fine	Middle	3.0	24.70	24.70	24.70	8.15	8.15	8.15	32.03	32.03	32.03	78.2	76.4	76.8	5.42	5.29	5.32	5.50	4.93	5.22	10	10.50
	13:52		Middle	3.0	24.70	24.70		8.15	8.15	8.15	32.03	32.03		76.6	75.9		5.30	5.25		5.19	5.24		11	
7/4/18	15:05	Cloudy	Middle	3.0	20.60	20.60	20.55	8.33	8.33	8.33	32.84	32.84	32.84	84.6	84.3	84.4	6.28	6.25	6.27	6.88	6.87	6.88	4	5.00
	15:07		Middle	3.0	20.50	20.50		8.33	8.33	8.33	32.84	32.84		84.5	84.3		6.27	6.26		6.89	6.87		6	
10/4/18	21:05	Cloudy	Middle	2.5	24.30	24.30	24.30	8.10	8.10	8.10	33.32	33.32	33.32	81.4	82.0	81.9	5.63	5.67	5.66	2.61	2.36	2.56	5	6.00
	21:06		Middle	2.5	24.30	24.30		8.10	8.10	8.10	33.32	33.32		82.4	81.6		5.70	5.64		2.93	2.33		7	
12/4/18	20:41	Cloudy	Middle	3.0	22.90	22.90	22.90	8.04	8.04	8.04	33.15	33.15	33.15	77.4	79.0	78.0	5.22	5.33	5.26	1.37	1.40	1.35	4	5.50
	20:42		Middle	3.0	22.90	22.90		8.04	8.04	8.04	33.15	33.15		77.4	78.1		5.22	5.27		1.32	1.30		7	
14/4/18	10:24	Fine	Middle	3.5	24.20	24.20	24.25	8.12	8.12	8.12	32.49	32.49	32.47	61.7	61.4	60.3	4.30	4.28	4.20	8.55	8.42	8.40	10	10.00
	10:26		Middle	3.5	24.30	24.30		8.12	8.12	8.12	32.45	32.45		58.9	59.2		4.10	4.12		8.34	8.29		10	
16/4/18	14:47	Cloudy	Middle	3.5	21.90	21.90	21.95	8.20	8.20	8.21	32.33	32.33	32.36	71.6	70.1	69.5	5.19	5.08	5.04	8.17	8.23	8.18	4	4.50
	14:49		Middle	3.5	22.00	22.00		8.22	8.22	8.21	32.39	32.39		68.9	67.4		5.00	4.88		8.13	8.18		5	
18/4/18	14:49	Fine	Middle	3.5	23.20	23.20	23.25	8.20	8.20	8.20	32.59	32.59	32.58	70.4	67.4	67.7	4.98	4.77	4.75	8.30	8.36	8.34	7	7.50
	14:51		Middle	3.5	23.30	23.30		8.20	8.20	8.20	32.57	32.57		66.4	66.7		4.69	4.57		8.35	8.35		8	
20/4/18	15:35	Cloudy	Middle	3.0	23.00	23.00	23.00	8.20	8.20	8.20	32.49	32.49	32.49	79.0	79.2	79.0	5.62	5.63	5.62	8.28	8.28	8.28	7	6.50
	15:37		Middle	3.0	23.00	23.00		8.20	8.20	8.20	32.49	32.49		79.0	78.9		5.62	5.61		8.28	8.28		6	
23/4/18	18:10	Cloudy	Middle	3.0	25.30	25.30	25.30	8.08	8.08	8.08	32.55	32.55	32.55	77.0	79.3	79.2	5.26	5.42	5.41	4.12	3.94	4.04	5	4.50
	18:11		Middle	3.0	25.30	25.30		8.08	8.08	8.08	32.54	32.54		80.3	80.1		5.49	5.47		3.97	4.14		4	
25/4/18	21:17	Cloudy	Middle	2.5	24.00	24.00	24.00	8.05	8.05	8.05	33.26	33.26	33.26	77.9	80.8	80.1	5.42	5.62	5.57	1.16	1.49	1.28	4	3.50
	21:18		Middle	2.5	24.00	24.00		8.05	8.05	8.05	33.26	33.26		80.9	80.7		5.63	5.62		1.25	1.20		3	

Remarks:
Single underline denotes exceedance over Action Level.
Double underline denotes exceedance over Limit Level.



**Water Monitoring Result at P4 - SOC
Mid-Ebb Tide**

Date	Time	Weater Condition	Sampling Depth		Water Temperature		pH		Salinity		DO Saturation		DO		Turbidity		Suspended Solids							
					°C		-		ppt		%		mg/L		NTU		mg/L							
					Value	Average	Value	Average	Value	Average	Value	Average	Value	Average	Value	Average	Value	Average	Value	Average				
28/3/18	22:24	Cloudy	Middle	3.0	21.40	21.40	21.40	8.14	8.14	8.14	32.36	32.36	32.36	81.1	82.0	80.5	5.94	6.00	5.90	2.92	2.84	2.58	9	8.00
	22:25		Middle	3.0	21.40	21.40		8.14	8.14		32.36	32.36		79.6	79.3		5.83	5.81		2.11	2.46		7	
30/3/18	12:46	Fine	Middle	3.0	21.00	21.00	21.00	8.07	8.07	8.07	31.78	31.78	31.78	72.1	73.1	72.5	5.05	5.13	5.09	1.20	1.15	1.14	4	4.00
	12:47		Middle	3.0	21.00	21.00		8.07	8.07		31.78	31.78		72.0	72.8		5.06	5.11		1.11	1.08		4	

Remarks:
Single underline denotes exceedance over Action Level.
Double underline denotes exceedance over Limit Level.



**Water Monitoring Result at P4 - SOC
Mid-Ebb Tide**

Date	Time	Weather Condition	Sampling Depth		Water Temperature		pH			Salinity		DO Saturation		DO		Turbidity		Suspended Solids						
					°C		-			ppt		%		mg/L		NTU		mg/L						
					Value	Average	Value	Average	Value	Average	Value	Average	Value	Average	Value	Average	Value	Average	Value	Average				
3/4/18	13:25	Fine	Middle	2.5	23.60	23.60	23.65	8.12	8.12	8.12	31.24	31.24	31.24	80.8	81.3	81.7	5.72	5.75	5.77	6.89	6.84	6.87	5	5.50
	13:27		Middle	2.5	23.70	23.70		8.12	8.12	8.12	31.24	31.24		82.1	82.5		5.80	5.82		6.87	6.88		6	
5/4/18	13:57	Fine	Middle	3.0	25.10	25.10	25.10	8.13	8.13	8.13	32.04	32.04	32.04	75.1	76.5	75.7	5.17	5.26	5.21	9.25	9.18	9.38	9	8.50
	13:58		Middle	3.0	25.10	25.10		8.13	8.13	8.13	32.04	32.04		75.8	75.3		5.22	5.18		9.65	9.43		8	
7/4/18	15:10	Cloudy	Middle	3.0	20.70	20.70	20.65	8.33	8.33	8.33	32.84	32.84	32.84	83.8	84.0	84.2	6.21	6.22	6.24	7.16	7.15	7.15	6	6.00
	15:12		Middle	3.0	20.60	20.60		8.33	8.33	8.33	32.84	32.84		84.5	84.3		6.27	6.25		7.15	7.15		6	
10/4/18	21:12	Cloudy	Middle	2.5	24.30	24.30	24.30	8.10	8.10	8.10	33.28	33.28	33.28	79.9	81.2	79.3	5.53	5.62	5.49	1.22	1.13	1.16	3	5.50
	21:13		Middle	2.5	24.30	24.30		8.10	8.10	8.10	33.28	33.28		78.3	77.9		5.42	5.40		1.23	1.06		8	
12/4/18	20:49	Cloudy	Middle	3.0	22.90	22.90	22.90	8.04	8.04	8.04	33.18	33.18	33.18	78.6	79.1	77.9	5.29	5.33	5.25	1.96	1.29	1.49	7	7.00
	20:50		Middle	3.0	22.90	22.90		8.04	8.04	8.04	33.18	33.18		77.3	76.4		5.21	5.15		1.25	1.46		7	
14/4/18	10:28	Fine	Middle	3.5	24.30	24.30	24.20	8.13	8.13	8.14	31.99	31.99	32.22	68.6	66.7	66.3	4.79	4.66	4.63	8.21	8.09	8.04	6	6.50
	10:30		Middle	3.5	24.10	24.10		8.14	8.14	8.14	32.45	32.45		65.3	64.4		4.56	4.49		7.97	7.87		7	
16/4/18	14:51	Cloudy	Middle	3.5	22.10	22.10	22.10	8.22	8.22	8.23	32.34	32.34	32.36	72.1	72.7	72.5	5.21	8.25	5.99	7.18	7.18	7.32	6	5.50
	14:53		Middle	3.5	22.10	22.10		8.23	8.23	8.23	32.38	32.38		73.2	71.8		5.29	5.19		7.45	7.47		5	
18/4/18	14:53	Fine	Middle	3.5	23.10	23.10	23.15	8.20	8.20	8.20	32.58	32.58	32.57	62.8	63.7	64.1	4.45	4.52	4.54	8.60	8.55	8.54	11	11.50
	14:55		Middle	3.5	23.20	23.20		8.20	8.20	8.20	32.55	32.55		64.1	65.6		4.54	4.65		8.51	8.50		12	
20/4/18	15:40	Cloudy	Middle	3.0	22.90	22.90	22.90	8.21	8.21	8.21	32.48	32.48	32.48	78.6	78.9	78.8	5.60	5.62	5.61	8.22	8.21	8.21	9	8.00
	15:42		Middle	3.0	22.90	22.90		8.21	8.21	8.21	32.48	32.48		78.8	78.9		5.61	5.62		8.20	8.19		7	
23/4/18	18:23	Cloudy	Middle	3.0	25.30	25.30	25.30	8.09	8.09	8.09	32.44	32.44	32.44	78.2	78.1	79.0	5.35	5.34	5.40	3.58	3.23	3.33	5	4.50
	18:24		Middle	3.0	25.30	25.30		8.09	8.09	8.09	32.44	32.44		80.9	78.7		5.53	5.38		3.16	3.33		4	
25/4/18	21:25	Cloudy	Middle	2.5	23.90	23.90	23.90	8.12	8.12	8.12	33.30	33.30	33.30	78.2	78.4	78.5	5.45	5.46	5.47	2.83	2.51	2.52	9	7.00
	21:26		Middle	2.5	23.90	23.90		8.12	8.12	8.12	33.30	33.30		78.9	78.3		5.50	5.45		2.33	2.41		5	

Remarks:
Single underline denotes exceedance over Action Level.
Double underline denotes exceedance over Limit Level.



**Water Monitoring Result at P5 - WCT / RT / IT
Mid-Ebb Tide**

Date	Time	Weater Condition	Sampling Depth		Water Temperature		pH		Salinity		DO Saturation		DO		Turbidity		Suspended Solids							
					°C		-		ppt		%		mg/L		NTU		mg/L							
					Value	Average	Value	Average	Value	Average	Value	Average	Value	Average	Value	Average	Value	Average	Value	Average				
28/3/18	22:30	Cloudy	Middle	3.0	21.30	21.30	21.30	8.14	8.14	8.14	32.38	32.38	32.38	77.3	77.7	77.3	5.68	5.70	5.67	2.04	1.78	1.89	8	7.00
	22:31		Middle	3.0	21.30	21.30		8.14	8.14		32.38	32.38		77.2	76.8		5.67	5.63		1.82	1.91		6	
30/3/18	13:03	Fine	Middle	3.0	21.20	21.20	21.20	8.07	8.07	8.07	31.90	31.90	31.90	73.5	74.0	73.0	5.14	5.18	5.11	1.29	1.33	1.36	7	8.00
	13:04		Middle	3.0	21.20	21.20		8.07	8.07		31.90	31.90		71.1	73.3		4.98	5.12		1.39	1.42		9	

Remarks:
Single underline denotes exceedance over Action Level.
Double underline denotes exceedance over Limit Level.



**Water Monitoring Result at P5 - WCT / RT / IT
Mid-Ebb Tide**

Date	Time	Weather Condition	Sampling Depth		Water Temperature			pH			Salinity			DO Saturation			DO			Turbidity			Suspended Solids	
					°C		-		ppt		%		mg/L		NTU		mg/L							
					Value	Average	Value	Average	Value	Average	Value	Average	Value	Average	Value	Average	Value	Average	Value	Average	Value	Average		
3/4/18	13:30	Fine	Middle	2.5	23.30	23.30	23.35	8.12	8.12	8.12	31.23	31.23	31.23	80.6	80.9	80.7	5.74	5.76	5.74	6.69	6.68	6.72	6	5.50
	13:32		Middle	2.5	23.40	23.40		8.12	8.12	8.12	31.23	31.23		80.3	80.9		5.71	5.75		5.74	6.77		6.73	
5/4/18	14:05	Fine	Middle	3.0	24.60	24.60	24.60	8.13	8.13	8.13	31.94	31.94	31.94	76.4	75.9	76.4	5.30	5.26	5.30	5.11	5.00	5.10	4	5.50
	14:06		Middle	3.0	24.60	24.60		8.13	8.13	8.13	31.94	31.95		76.5	76.9		5.30	5.33		5.30	5.16		5.14	
7/4/18	15:15	Cloudy	Middle	3.0	20.40	20.40	20.40	8.33	8.33	8.33	32.88	32.88	32.88	84.0	84.2	84.0	6.25	6.27	6.26	8.67	8.66	8.62	4	4.00
	15:17		Middle	3.0	20.40	20.40		8.33	8.33	8.33	32.88	32.88		83.7	84.0		6.23	6.27		6.26	8.58		8.56	
10/4/18	21:21	Cloudy	Middle	2.5	24.30	24.30	24.30	8.10	8.10	8.10	33.27	33.27	33.27	79.8	81.2	80.1	5.52	5.62	5.54	1.53	1.35	1.44	6	6.00
	21:22		Middle	2.5	24.30	24.30		8.10	8.10	8.10	33.27	33.27		80.9	78.3		5.60	5.43		5.54	1.49		1.40	
12/4/18	20:57	Cloudy	Middle	3.0	23.00	23.00	23.00	8.04	8.04	8.04	33.19	33.19	33.19	76.6	79.3	77.5	5.16	5.36	5.22	1.86	1.27	1.68	7	7.00
	20:58		Middle	3.0	23.00	23.00		8.04	8.04	8.04	33.19	33.19		77.5	76.6		5.22	5.15		5.22	1.96		1.63	
14/4/18	10:32	Fine	Middle	3.5	24.00	24.00	24.00	8.14	8.14	8.15	32.34	32.34	32.40	67.5	63.6	66.4	4.73	4.45	4.65	8.23	8.23	8.22	10	9.50
	10:34		Middle	3.5	24.00	24.00		8.15	8.15	8.15	32.45	32.45		65.4	69.1		4.58	4.84		4.65	8.23		8.17	
16/4/18	14:55	Cloudy	Middle	3.5	22.10	22.10	22.10	8.23	8.23	8.24	31.43	31.43	31.92	73.2	71.4	71.3	5.30	5.17	5.16	8.39	8.39	8.42	6	6.00
	14:57		Middle	3.5	22.10	22.10		8.24	8.24	8.24	32.40	32.40		70.7	69.8		5.11	5.05		5.16	8.40		8.49	
18/4/18	14:57	Fine	Middle	3.5	23.20	23.20	23.20	8.20	8.20	8.21	32.57	32.57	32.57	65.9	65.8	65.8	4.67	4.67	4.66	9.10	9.08	9.08	8	8.00
	14:59		Middle	3.5	23.20	23.20		8.21	8.21	8.21	32.57	32.57		65.7	65.7		4.66	4.65		4.66	9.09		9.04	
20/4/18	15:45	Cloudy	Middle	3.0	23.00	23.00	23.00	8.21	8.21	8.21	32.49	32.49	32.49	78.2	78.2	78.5	5.56	5.56	5.58	7.92	7.91	7.91	8	8.00
	15:47		Middle	3.0	23.00	23.00		8.21	8.21	8.21	32.49	32.49		78.6	79.0		5.59	5.62		5.58	7.90		7.90	
23/4/18	18:29	Cloudy	Middle	3.0	25.40	25.40	25.40	8.07	8.07	8.07	32.54	32.54	32.54	76.0	78.4	78.0	5.19	5.33	5.32	4.44	4.32	4.35	6	6.00
	18:30		Middle	3.0	25.40	25.40		8.07	8.07	8.07	32.54	32.54		77.9	79.8		5.32	5.45		5.32	4.25		4.39	
25/4/18	21:33	Cloudy	Middle	2.5	23.90	23.90	23.90	8.11	8.11	8.11	33.32	33.32	33.32	80.6	80.2	79.9	5.61	5.59	5.57	1.83	1.18	1.47	3	4.00
	21:34		Middle	2.5	23.90	23.90		8.11	8.11	8.11	33.32	33.32		79.5	79.4		5.54	5.53		5.57	1.23		1.62	

Remarks:
Single underline denotes exceedance over Action Level.
Double underline denotes exceedance over Limit Level.



**Water Monitoring Result at RW21-P789 - GEC / CRB / SHK
Mid-Ebb Tide**

Date	Time	Weather Condition	Sampling Depth		Water Temperature		pH		Salinity		DO Saturation		DO		Turbidity		Suspended Solids							
					°C		-		ppt		%		mg/L		NTU		mg/L							
			m	Value	Average	Value	Average	Value	Average	Value	Average	Value	Average	Value	Average	Value	Average	Value	Average					
28/3/18	21:56	Cloudy	Middle	4.0	21.50	21.50	21.58	8.12	8.12	8.12	32.49	32.50	32.49	78.6	79.5	79.6	5.74	5.82	5.81	1.46	1.19	1.30	4	6.00
	21:57		Middle	4.0	21.50	21.80		8.12	8.12		32.49	32.49		80.1	80.0		5.85	5.84		1.20	1.33		8	
30/3/18	13:31	Fine	Middle	3.5	23.40	23.40	23.35	8.05	8.05	8.05	32.00	32.00	32.00	72.6	74.8	73.5	4.90	5.05	4.96	2.21	2.18	2.24	8	8.00
	13:32		Middle	3.5	23.30	23.30		8.05	8.05		32.00	32.00		73.5	73.1		4.95	4.92		2.46	2.11		8	

Remarks:
Single underline denotes exceedance over Action Level.
Double underline denotes exceedance over Limit Level.



**Water Monitoring Result at RW21-P789 - GEC/CRB/SHK
Mid-Ebb Tide**

Date	Time	Weater Condition	Sampling Depth		Water Temperature		pH			Salinity		DO Saturation		DO		Turbidity		Suspended Solids						
					°C		-			ppt		%		mg/L		NTU		mg/L						
					Value	Average	Value	Average	Value	Average	Value	Average	Value	Average	Value	Average	Value	Average	Value	Average				
3/4/18	13:50	Fine	Middle	3.5	23.80	23.80	23.90	8.14	8.14	8.14	31.48	31.48	31.47	82.5	82.9	82.8	5.80	5.83	5.82	6.53	6.53	6.52	6	6.00
	13:52		Middle	3.5	24.00	24.00		8.14	8.14	8.14	31.46	31.46		83.0	82.9		5.82	5.82		6.51	6.52		6	
5/4/18	13:20	Fine	Middle	4.0	23.80	23.80	23.80	8.13	8.13	8.13	31.94	31.94	31.94	71.9	72.9	72.0	5.06	5.13	5.06	4.21	3.19	3.91	10	9.50
	13:21		Middle	4.0	23.80	23.80		8.13	8.13	8.13	31.94	31.94		71.3	71.7		5.01	5.04		4.07	4.16		9	
7/4/18	15:50	Cloudy	Middle	4.0	21.40	21.40	21.40	8.32	8.32	8.32	32.85	32.85	32.86	86.1	86.2	86.1	6.29	6.30	6.29	6.73	6.75	6.75	6	7.00
	15:52		Middle	4.0	21.40	21.40		8.32	8.32	8.32	32.86	32.86		85.7	86.3		6.27	6.31		6.76	6.76		8	
10/4/18	21:45	Cloudy	Middle	3.5	24.90	24.90	24.90	8.01	8.01	8.01	32.62	32.62	32.62	74.4	73.0	74.1	5.11	5.02	5.10	1.20	1.09	1.20	7	5.50
	21:46		Middle	3.5	24.90	24.90		8.01	8.01	8.01	32.62	32.62		74.2	74.9		5.10	5.15		1.37	1.12		4	
12/4/18	21:15	Cloudy	Middle	4.0	23.90	23.90	23.90	7.94	7.95	7.95	33.05	33.05	33.05	76.6	76.9	77.1	5.17	5.19	5.20	1.13	1.21	1.17	5	5.00
	21:16		Middle	4.0	23.90	23.90		7.95	7.95	7.95	33.05	33.05		77.1	77.8		5.20	5.25		1.18	1.15		5	
14/4/18	10:54	Fine	Middle	3.5	24.30	24.30	24.30	8.12	8.12	8.13	32.63	32.63	32.59	68.3	66.5	65.9	4.75	4.63	4.58	5.64	5.83	5.70	5	4.00
	10:56		Middle	3.5	24.30	24.30		8.14	8.14	8.13	32.54	32.54		64.9	63.8		4.51	4.44		5.67	5.64		3	
16/4/18	15:13	Cloudy	Middle	3.5	22.80	22.80	22.80	8.21	8.21	8.21	32.40	32.40	32.41	64.3	63.3	63.0	4.60	4.52	4.50	8.62	8.60	8.56	4	4.50
	15:15		Middle	3.5	22.80	22.80		8.21	8.21	8.21	32.41	32.41		62.5	61.9		4.47	4.42		4.50	8.58		8.44	
18/4/18	15:38	Fine	Middle	3.5	23.20	23.20	23.20	8.21	8.21	8.21	32.62	32.62	32.62	64.3	62.9	62.2	4.56	4.44	4.40	8.20	8.20	8.17	11	10.00
	15:40		Middle	3.5	23.20	23.20		8.20	8.20	8.21	32.61	32.61		61.3	60.2		4.34	4.26		4.40	8.20		8.08	
20/4/18	13:30	Cloudy	Middle	4.0	23.60	23.60	23.65	8.17	8.17	8.17	32.70	32.70	32.69	79.3	79.4	78.9	5.57	5.58	5.54	6.59	6.59	6.59	6	7.00
	13:32		Middle	4.0	23.70	23.70		8.17	8.17	8.17	32.68	32.68		78.2	78.8		5.49	5.53		5.54	6.58		6.59	
23/4/18	18:49	Cloudy	Middle	3.5	25.00	25.00	25.00	8.02	8.02	8.02	32.72	32.72	32.72	80.4	80.0	80.3	5.50	5.48	5.49	4.14	4.08	4.18	5	5.50
	18:50		Middle	3.5	25.00	25.00		8.02	8.02	8.02	32.72	32.72		80.0	80.6		5.47	5.52		5.49	4.29		4.19	
25/4/18	21:48	Cloudy	Middle	3.5	24.40	24.40	24.40	8.07	8.07	8.26	33.21	33.21	33.21	78.8	78.4	79.0	5.45	5.42	5.45	1.51	1.32	1.42	7	7.50
	21:49		Middle	3.5	24.40	24.40		8.80	8.08	8.26	33.21	33.21		79.6	79.2		5.48	5.46		5.45	1.34		1.49	

Remarks:
Single underline denotes exceedance over Action Level.
Double underline denotes exceedance over Limit Level.



**Water Monitoring Result at WSD19 - Sheung Wan
Mid-Ebb Tide**

Date	Time	Weather Condition	Sampling Depth		Water Temperature		pH		Salinity		DO Saturation		DO		Turbidity		Suspended Solids							
					°C		-		ppt		%		mg/L		NTU		mg/L							
			m	Value	Average	Value	Average	Value	Average	Value	Average	Value	Average	Value	Average	Value	Average	Value	Average					
28/3/18	22:50	Cloudy	Middle	3.5	21.40	21.40	21.40	8.00	8.01	8.01	31.21	31.21	31.19	79.0	79.2	78.7	5.82	5.84	5.81	2.49	2.83	2.61	9	7.50
	22:51		Middle	3.5	21.40	21.40		8.01	8.01		31.21	31.12		78.2	78.4		5.80	5.78		2.71	2.41		6	
30/3/18	11:15	Fine	Middle	4.0	22.70	22.70	22.70	8.00	8.00	8.00	30.87	30.87	30.87	76.7	75.3	75.6	5.25	5.16	5.17	2.58	2.02	2.25	8	9.00
	11:16		Middle	4.0	22.70	22.70		8.00	8.00		30.87	30.87		75.4	75.0		5.16	5.12		2.16	2.24		10	

Remarks:
Single underline denotes exceedance over Action Level.
Double underline denotes exceedance over Limit Level.



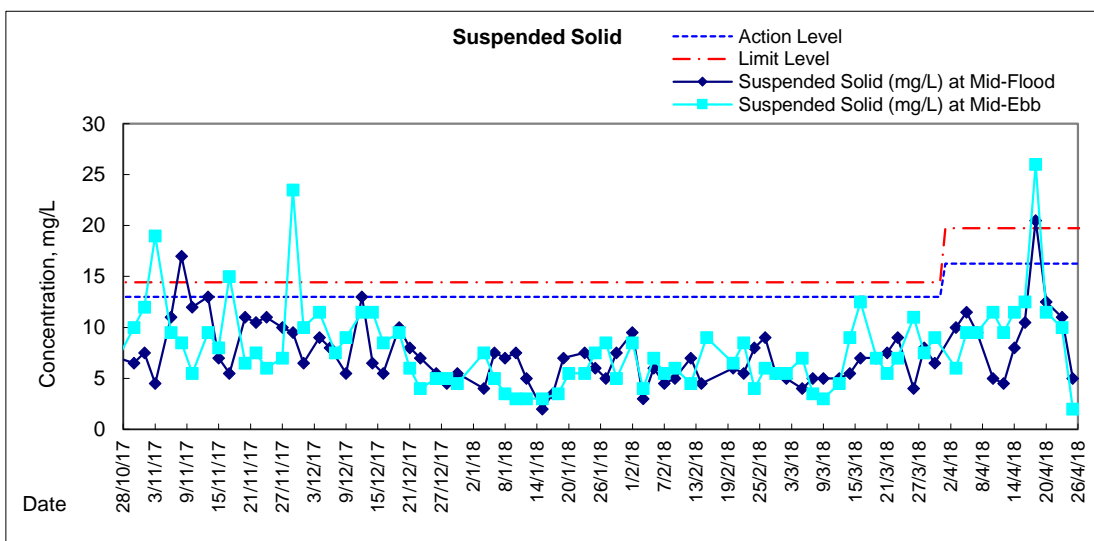
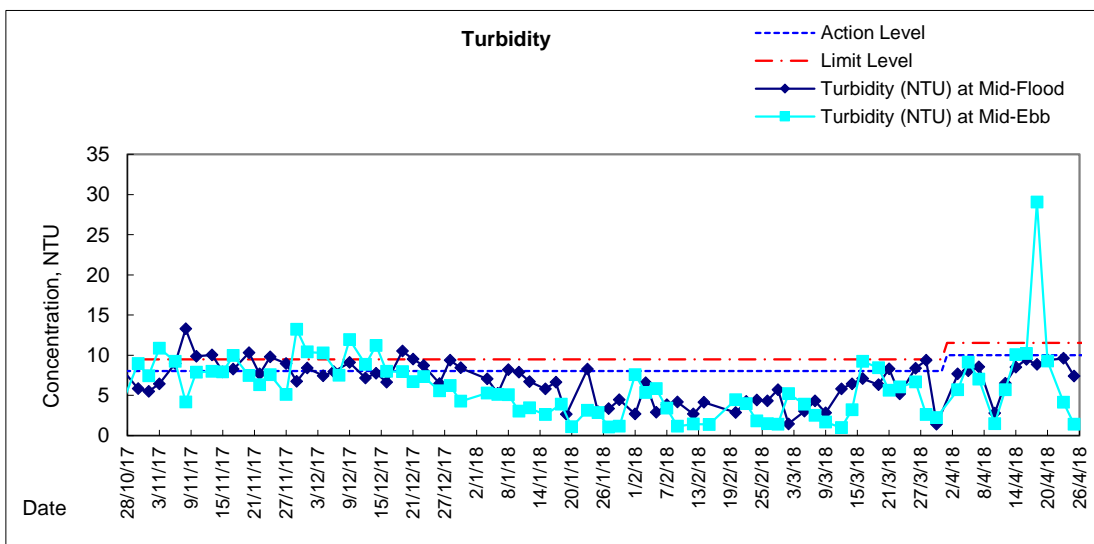
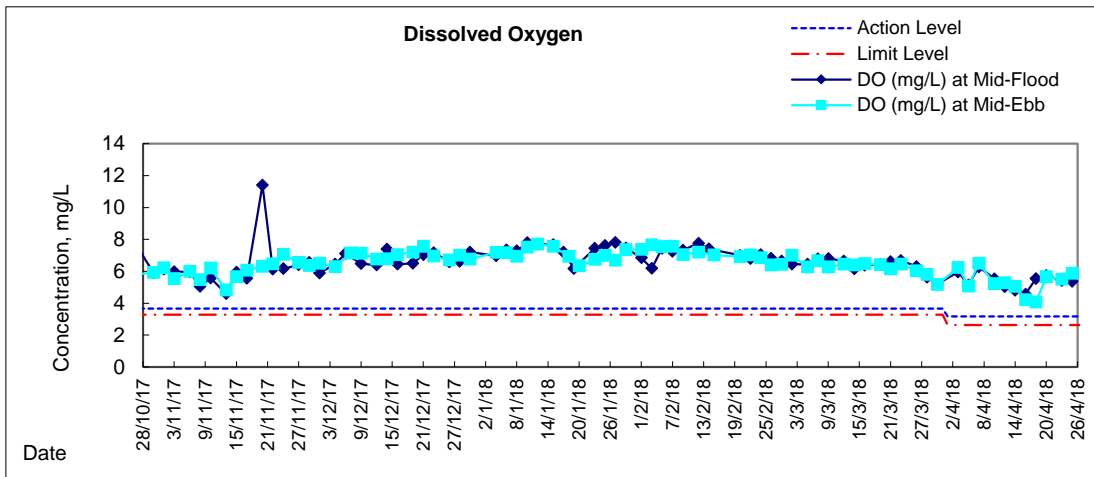
**Water Monitoring Result at WSD19 - Sheung Wan
Mid-Ebb Tide**

Date	Time	Weather Condition	Sampling Depth		Water Temperature		pH			Salinity		DO Saturation		DO		Turbidity		Suspended Solids						
					°C		-			ppt		%		mg/L		NTU		mg/L						
					Value	Average	Value	Average	Value	Average	Value	Average	Value	Average	Value	Average	Value	Average	Value	Average				
3/4/18	14:15	Fine	Middle	4.0	24.10	24.10	24.15	8.19	8.19	8.19	31.04	31.04	31.04	89.0	89.1	88.9	6.25	6.26	6.24	5.67	5.67	5.69	5	6.00
	14:17		Middle	4.0	24.20	24.20		8.19	8.19	8.19	31.04	31.04		88.8	88.7		88.9	6.23		6.22	6.24		5.68	
5/4/18	14:35	Fine	Middle	4.0	25.50	25.50	25.50	8.13	8.13	8.13	32.01	32.01	32.01	73.7	74.8	74.1	5.04	5.11	5.06	9.01	8.57	9.13	10	9.50
	14:36		Middle	4.0	25.50	25.50		8.13	8.13	8.13	32.01	32.01		74.5	73.3		74.1	5.09		5.01	5.06		9.62	
7/4/18	14:00	Cloudy	Middle	4.0	20.60	20.60	20.55	8.31	8.31	8.31	32.48	32.48	32.48	87.6	87.6	87.5	6.51	6.51	6.50	6.93	7.02	7.00	9	9.50
	14:02		Middle	4.0	20.50	20.50		8.31	8.31	8.31	32.48	32.48		87.4	87.2		87.5	6.50		6.49	6.50		7.03	
10/4/18	19:45	Cloudy	Middle	4.0	24.80	24.80	24.80	7.98	7.98	7.98	32.97	32.97	32.97	74.4	77.0	76.1	5.12	5.29	5.23	1.66	1.61	1.48	8	11.50
	19:46		Middle	4.0	24.80	24.80		7.98	7.98	7.98	32.97	32.97		76.7	76.3		76.1	5.27		5.25	5.23		1.29	
12/4/18	19:30	Cloudy	Middle	4.0	23.80	23.80	23.80	7.98	7.98	7.98	33.05	33.05	33.05	78.9	79.5	78.1	5.32	5.36	5.27	5.98	5.77	5.70	10	9.50
	19:31		Middle	4.0	23.80	23.80		7.98	7.98	7.98	33.05	33.05		77.0	77.1		78.1	5.20		5.21	5.27		5.61	
14/4/18	11:33	Fine	Middle	3.5	24.50	24.50	24.55	8.06	8.06	8.09	32.39	32.39	32.33	72.7	70.4	73.0	5.04	4.86	5.05	10.25	10.09	10.07	11	11.50
	11:35		Middle	3.5	24.60	24.60		8.12	8.12	8.09	32.27	32.27		74.7	74.1		73.0	5.17		5.13	5.05		10.00	
16/4/18	13:24	Cloudy	Middle	3.5	22.40	22.40	22.40	8.17	8.17	8.19	32.33	32.33	32.34	58.6	58.4	58.6	4.21	4.20	4.21	10.42	10.27	10.21	13	12.50
	13:26		Middle	3.5	22.40	22.40		8.20	8.20	8.19	32.34	32.34		58.6	58.6		58.6	4.21		4.22	4.21		10.09	
18/4/18	13:30	Fine	Middle	3.5	23.90	23.90	24.00	8.15	8.15	8.16	32.61	32.61	32.09	59.4	58.5	58.3	4.15	4.09	4.07	29.22	29.22	29.05	25	26.00
	13:32		Middle	3.5	24.10	24.10		8.17	8.17	8.16	31.56	31.56		57.8	57.3		58.3	4.03		4.00	4.07		29.22	
20/4/18	14:05	Cloudy	Middle	4.0	23.40	23.40	23.45	8.18	8.19	8.19	32.33	31.76	32.04	80.3	80.4	80.3	5.67	5.68	5.67	9.32	9.27	9.27	11	11.50
	14:07		Middle	4.0	23.50	23.50		8.19	8.19	8.19	32.33	31.75		80.3	80.1		80.3	5.66		5.65	5.67		9.25	
23/4/18	17:00	Cloudy	Middle	4.0	25.90	25.90	25.90	7.99	7.99	8.00	31.66	31.66	31.66	81.1	81.5	81.2	5.50	5.53	5.51	4.09	4.17	4.13	13	10.00
	17:01		Middle	4.0	25.90	25.90		8.00	8.00	8.00	31.66	31.66		81.4	80.9		81.2	5.52		5.49	5.51		4.22	
25/4/18	19:30	Cloudy	Middle	4.0	24.20	24.20	24.20	7.99	7.99	7.99	32.99	32.99	32.99	77.1	78.9	78.0	5.78	5.95	5.87	1.21	1.28	1.40	2	2.00
	19:31		Middle	4.0	24.20	24.20		7.99	7.99	7.99	32.99	32.99		78.5	77.6		78.0	5.91		5.82	5.87		1.98	

Remarks:
Single underline denotes exceedance over Action Level.
Double underline denotes exceedance over Limit Level.

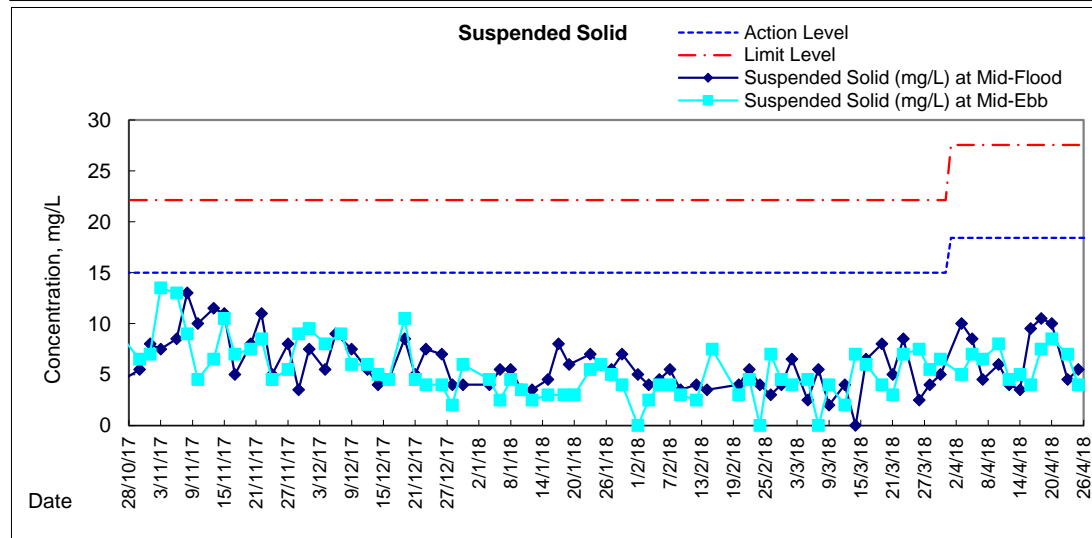
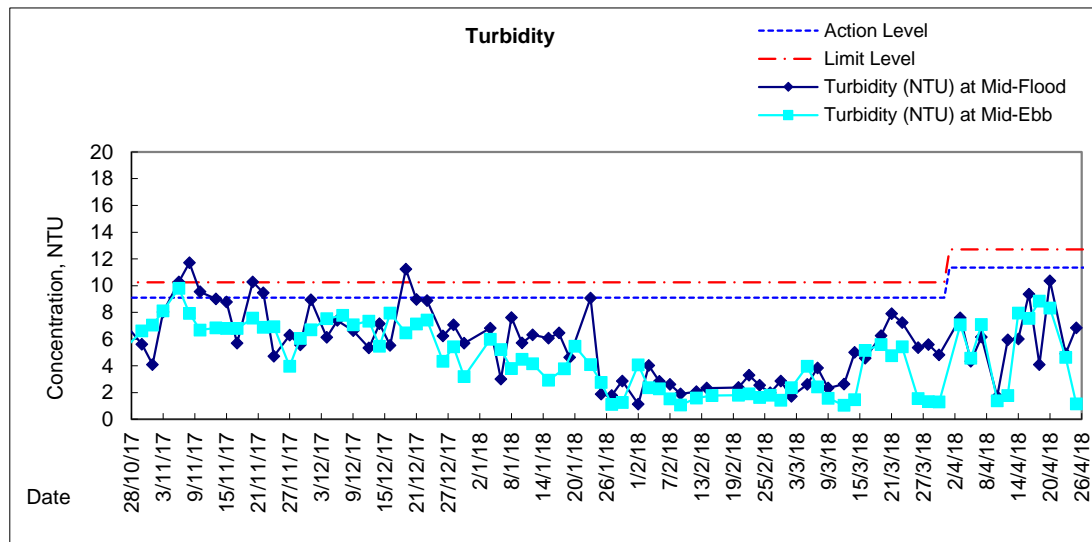
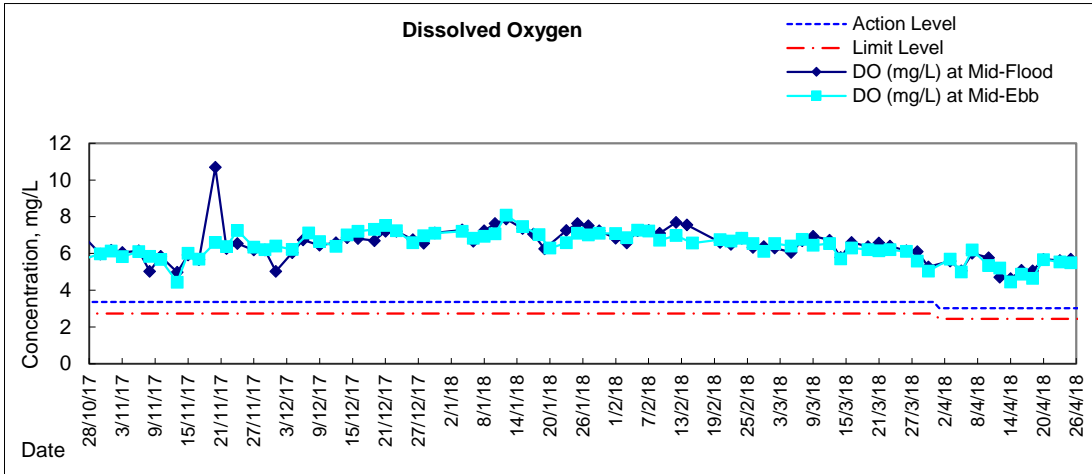


Graphic Presentation of Water Quality Result of WSD19 - Sheung Wan



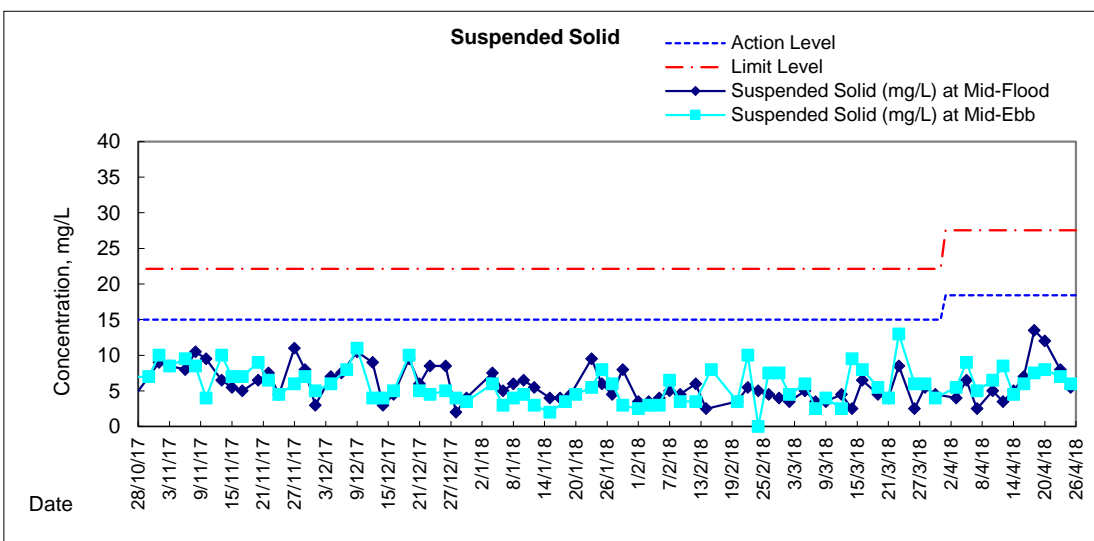
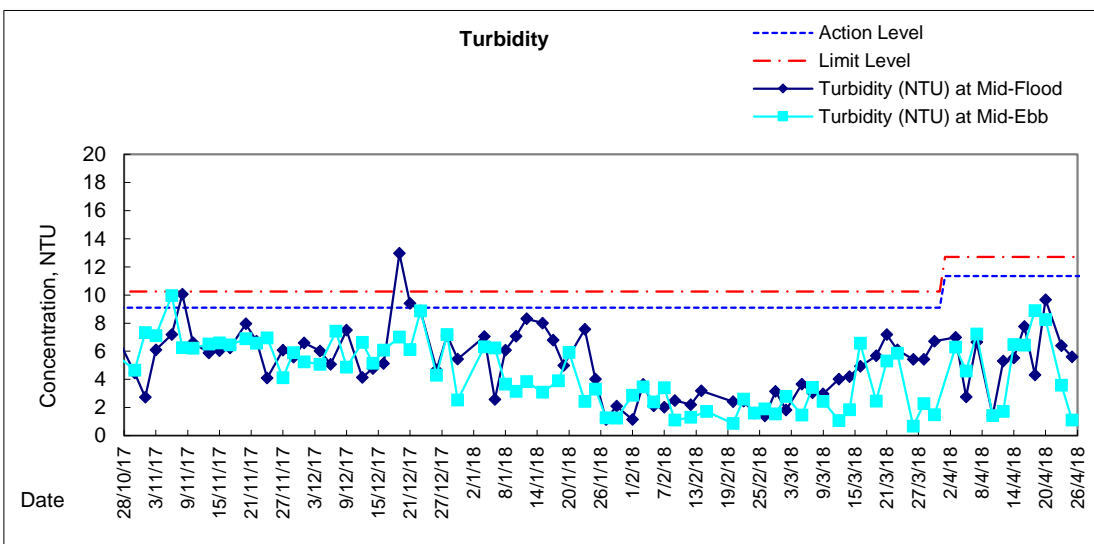
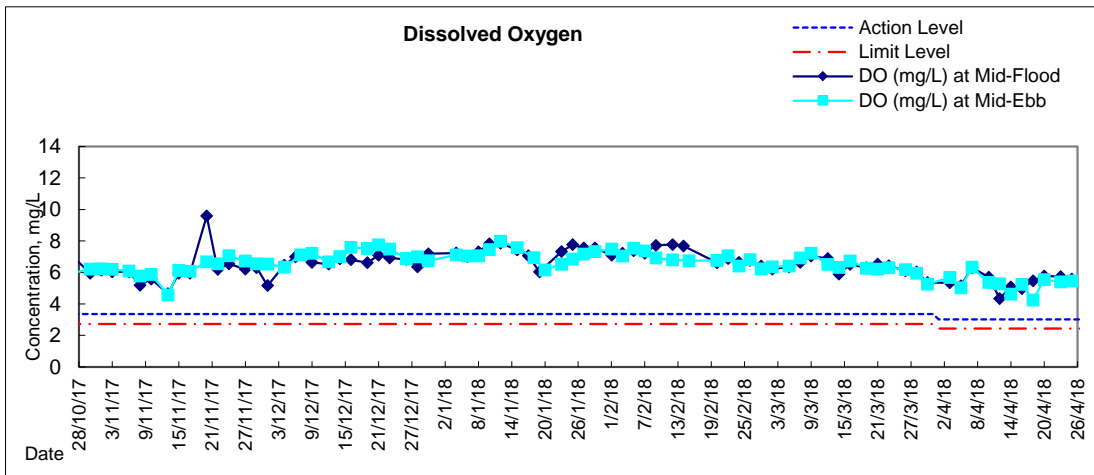


Graphic Presentation of Water Quality Result of C1 - HKCEC



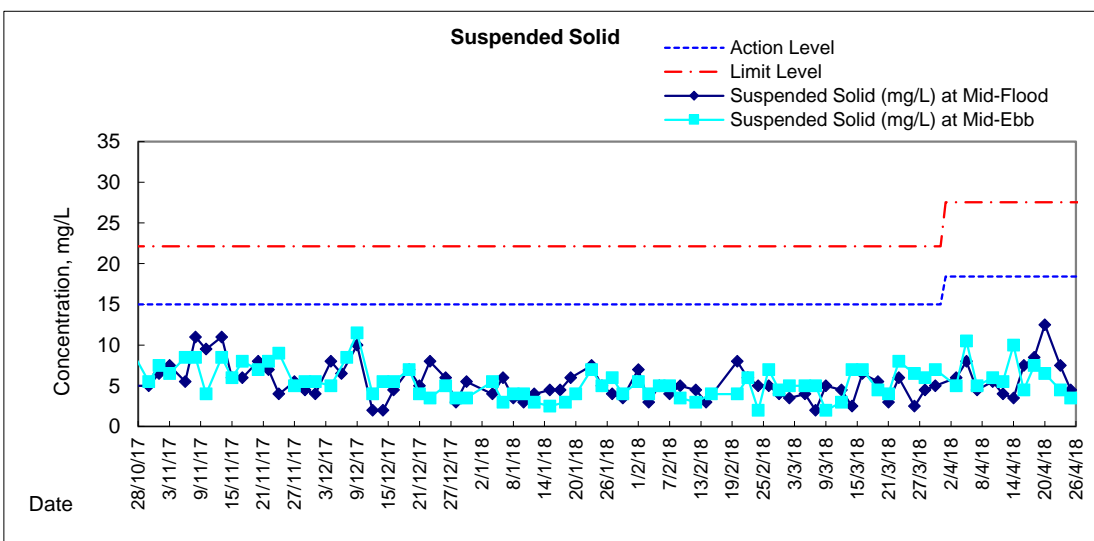
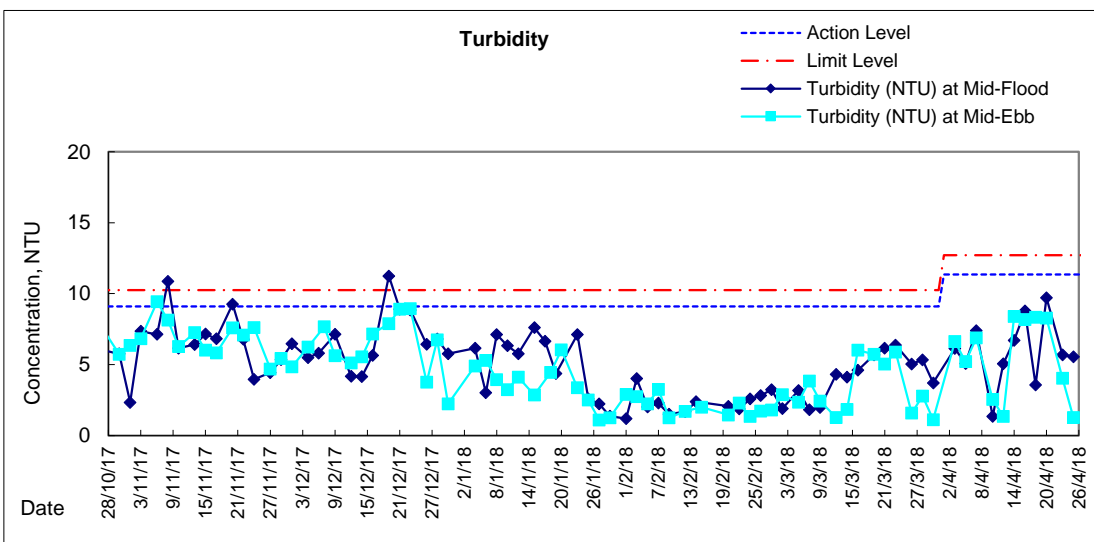
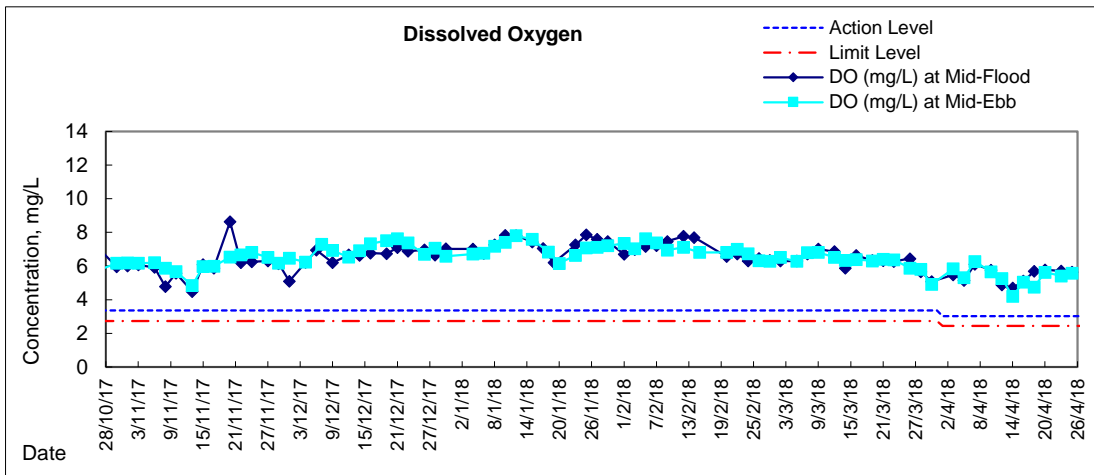


Graphic Presentation of Water Quality Result of P1 - HKCEC Phase I



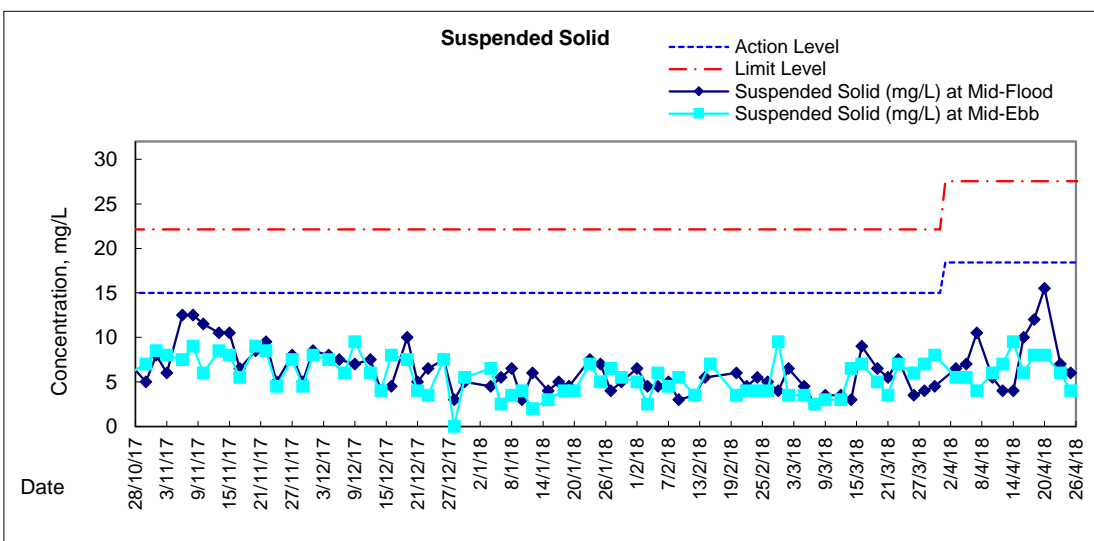
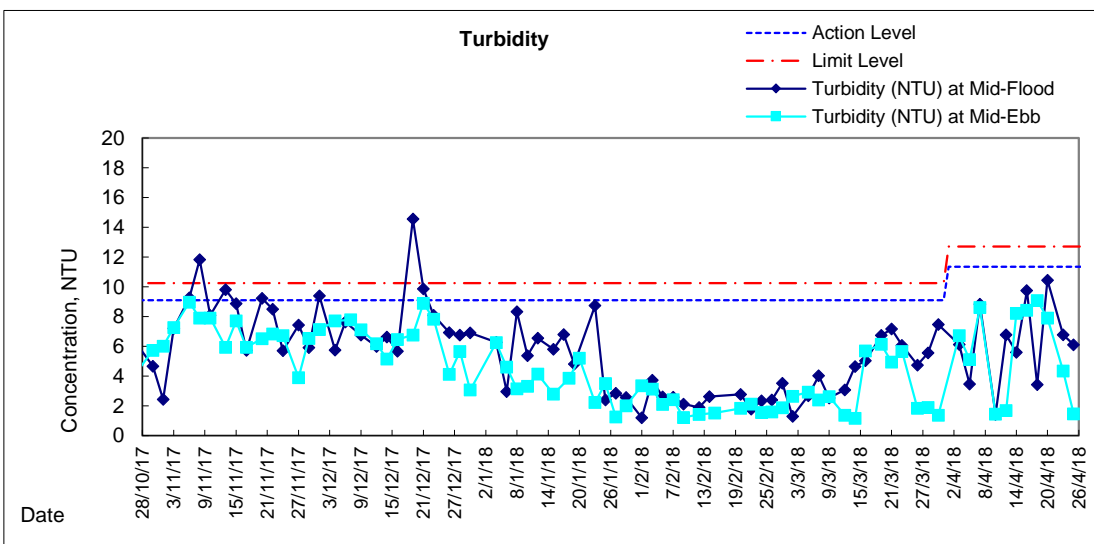
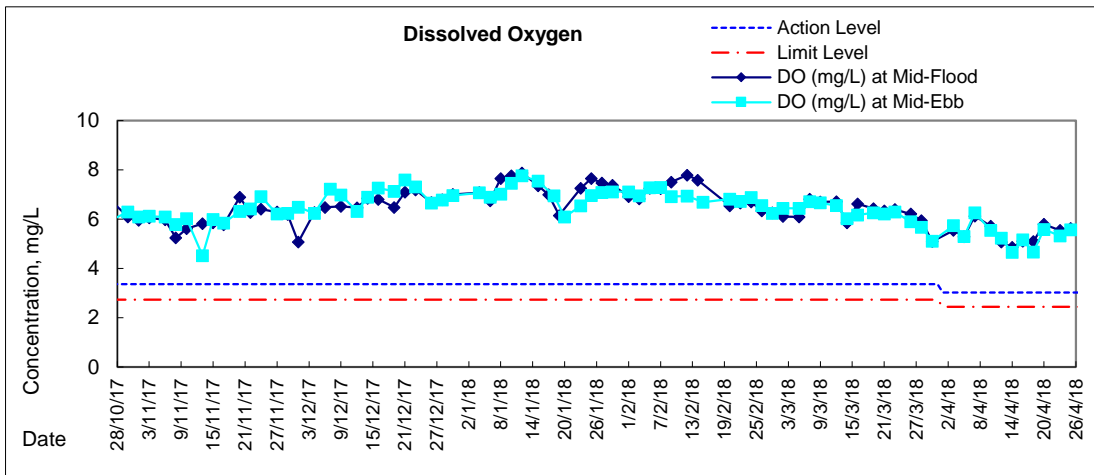


Graphic Presentation of Water Quality Result of P3 - APA



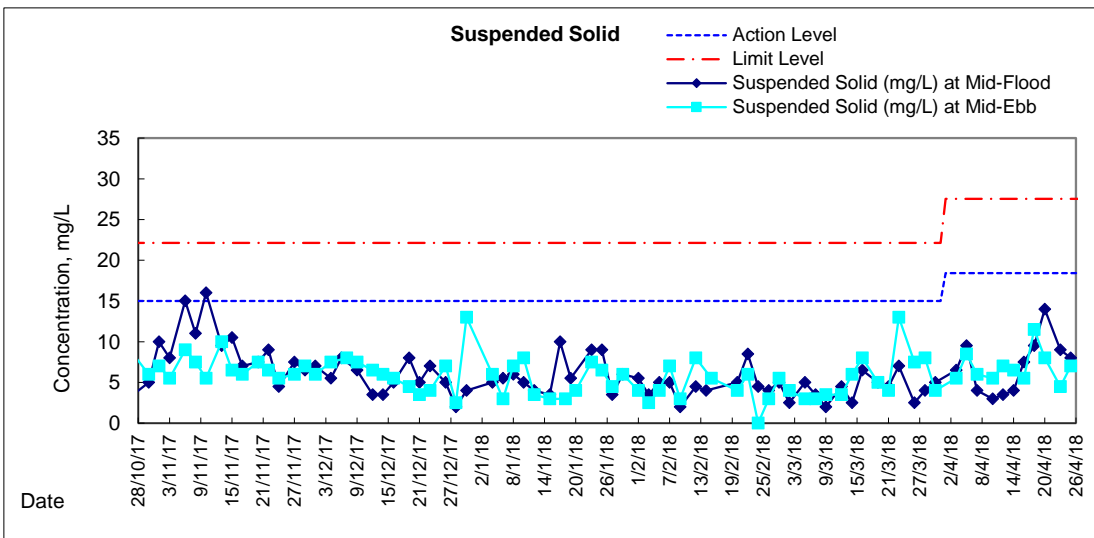
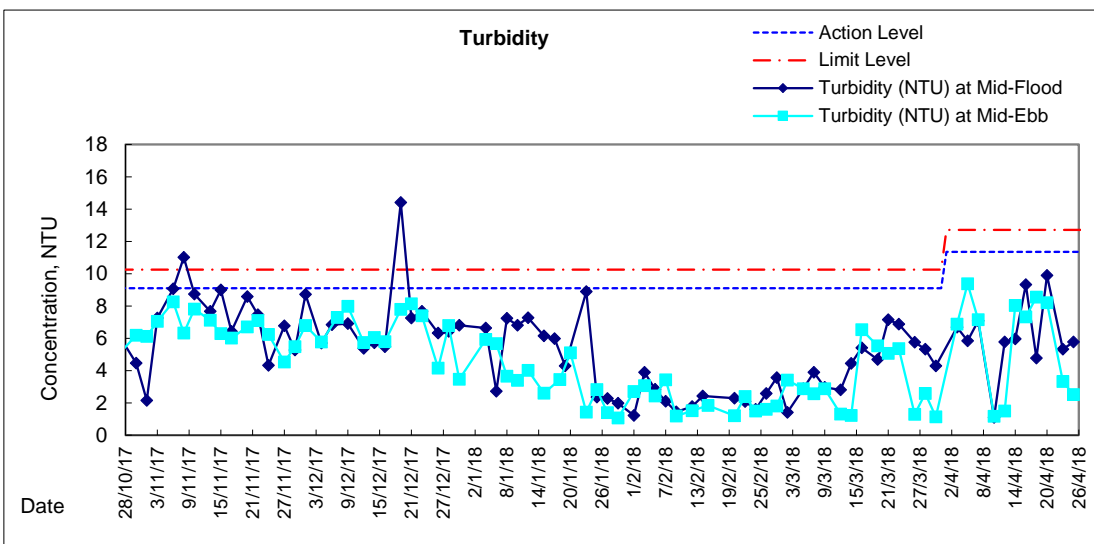
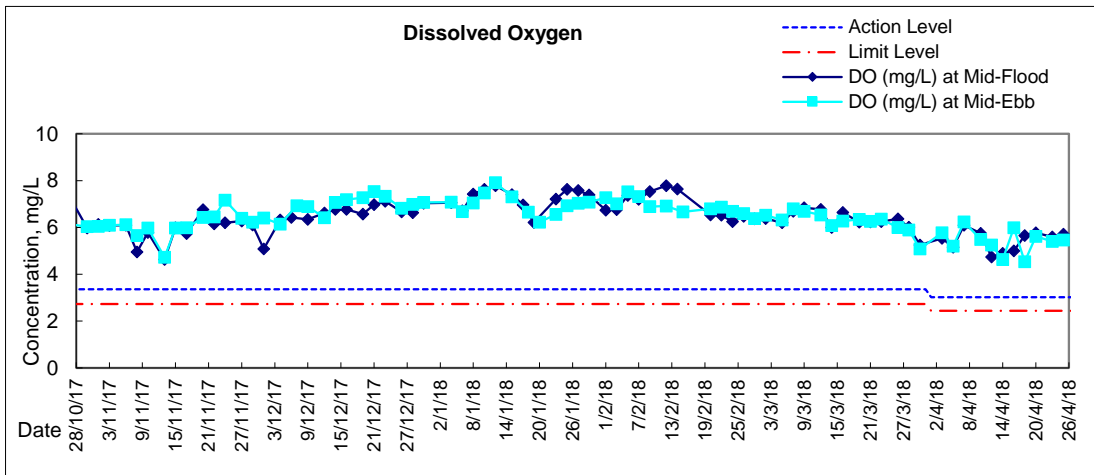


Graphic Presentation of Water Quality Result of P5 - WCT / RT / IT



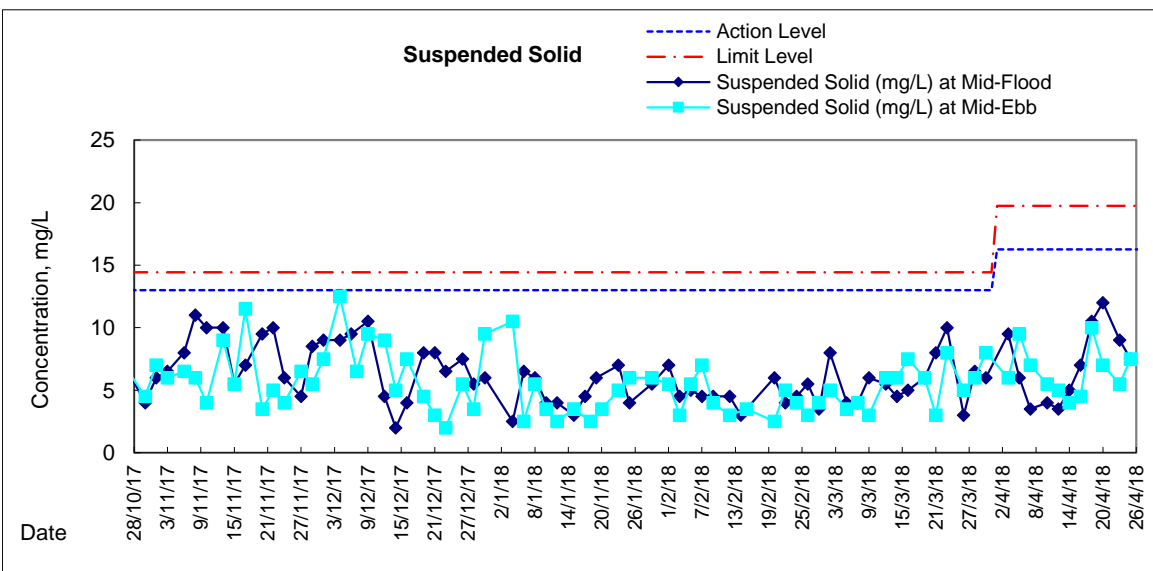
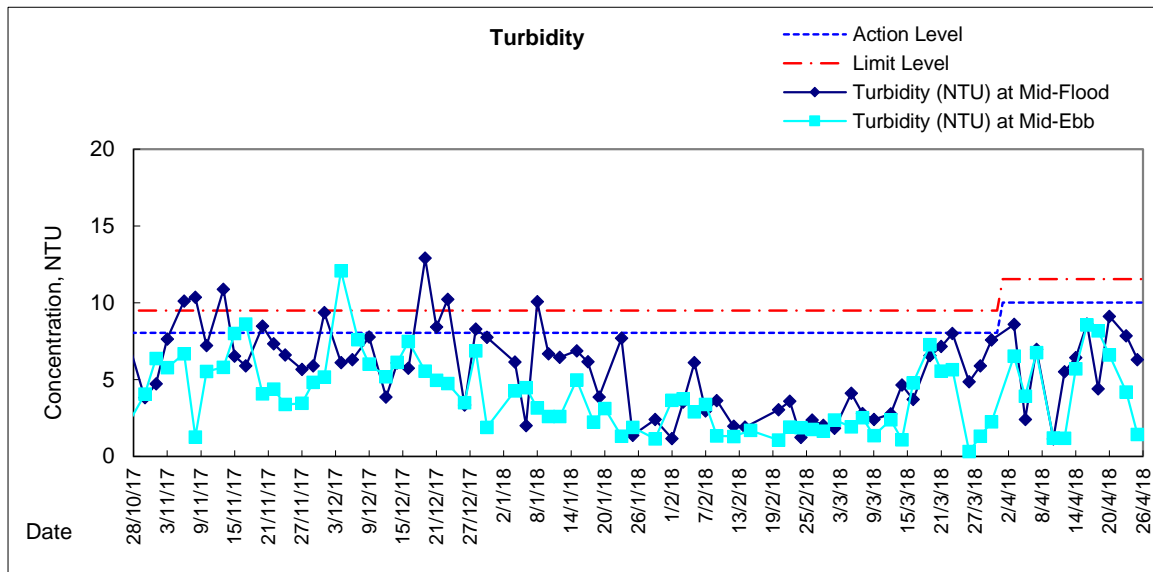
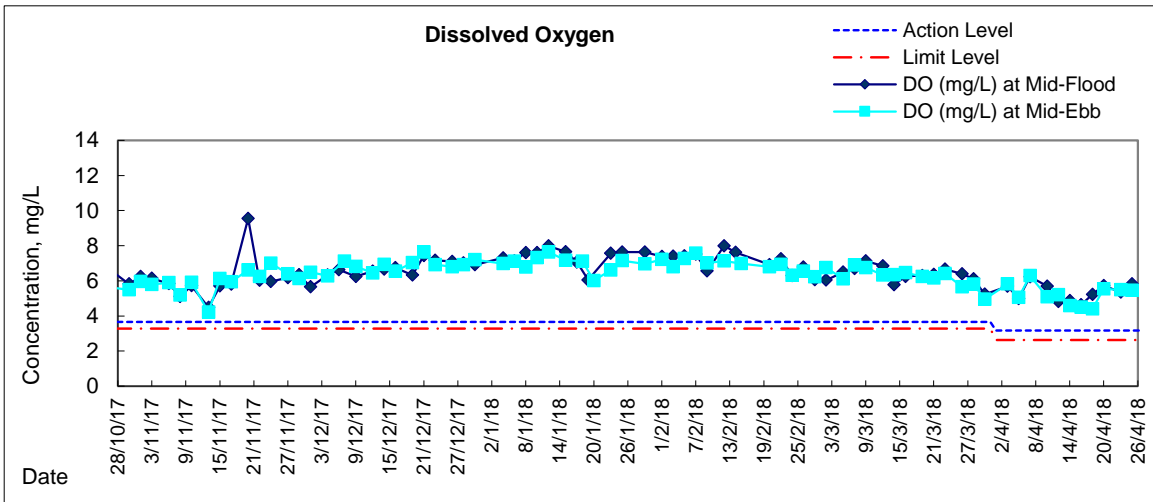


Graphic Presentation of Water Quality Result of P4 - SOC





Graphic Presentation of Water Quality Result of RW21-P789 - GEC/CRC/SHK





Graphic Presentation of Water Quality Result of C7 - Windsor House

